

Cureghem

Scherdemaël & Quartier des étangs

Le Meir

# ANDERLECHT

TAKE A WALK ON THE ANDERLECHT SIDE

Neerpède & Bon Air

Vogelenzang & La Roue

Historic centre De Rinck

ANDERLECHT



**TAKE A WALK ON THE ANDERLECHT SIDE**

	PLACES OF INTEREST	8
CUREGHEM	MUSEUMS & EXHIBITION VENUE	11
	ENTERTAINMENT	13
	EATING OUT	13
	ACCOMMODATION	14
	PLACES OF INTEREST	16
CENTRE: DE RINCK	MUSEUMS & EXHIBITION VENUES	20
Historic centre	PARK	24
	ENTERTAINMENT	24
	EATING OUT	24
	ACCOMMODATION	24
	PLACES OF INTEREST	26
CENTRE: LE MEIR	MUSEUM	29
	PARK	30
	ENTERTAINMENT	30
	EATING OUT	31
	ACCOMMODATION	31
	PLACES OF INTEREST	33
CHARLEROI CANAL	PARK	35
From Biestebroeck to Waesbroeck	ENTERTAINMENT	35
	ACCOMMODATION	35
	MUSEUMS	37
MEYLEMEERSCH	ACCOMMODATION	38
	PLACES OF INTEREST	40
MOORTEBEEK & PETERBOS	EXHIBITION VENUE	41
	ENTERTAINMENT	41
	PLACES OF INTEREST	43
NEERPEDE & BON AIR	MUSEUM & EXHIBITION VENUE	44
	NATURE RESERVE	45
	ENTERTAINMENT	46
	EATING OUT	46
SCHERDEMAEL & QUARTIER DES ÉTANGS (Ponds district)	PARKS	48
	ENTERTAINMENT	48
	PLACES OF INTEREST	50
SCHEUT	ENTERTAINMENT	51
	EATING OUT	52
	MUSEUM	52
	PLACES OF INTEREST	54
VOGELENZANG & LA ROUE	NATURE RESERVE	55
	ENTERTAINMENT	55
	EATING OUT	55



Fabienne Miroir  
Deputy-mayor for Tourism

**Anderlecht,  
city of art and history**

Over here, ladies and gentlemen! The guided tour is about to commence!

Welcome to Anderlecht, a commune about to reveal its often unknown and sometimes surprising treasures.

Discover the traces of Brussels' history, sometimes evidence of austerity and sometimes bearing witness to the charity of our inhabitants past and present.

No less than nine museums will transport you through time and space - from Erasmus the humanist to the poet Maurice Carême, you will discover the industrial development of Anderlecht and medical advances displayed in the Campus museum of Erasmus University.

A stop at the Brussels Gueuze (beer) museum is a must, before continuing on your way...

Stay with us, the tour is far from over!

Depending on your taste, you can stroll to your heart's content through Anderlecht's quarters in search of styles that represent the history of our architecture.

From neo-Gothic to Romanesque, with a passing reference to Art Nouveau and Art Deco, you will be charmed by the design of our garden cities.

For art and exhibition fans, the neo-classical house of artists will give them the opportunity to admire the work of exhibitors from various artistic movements.

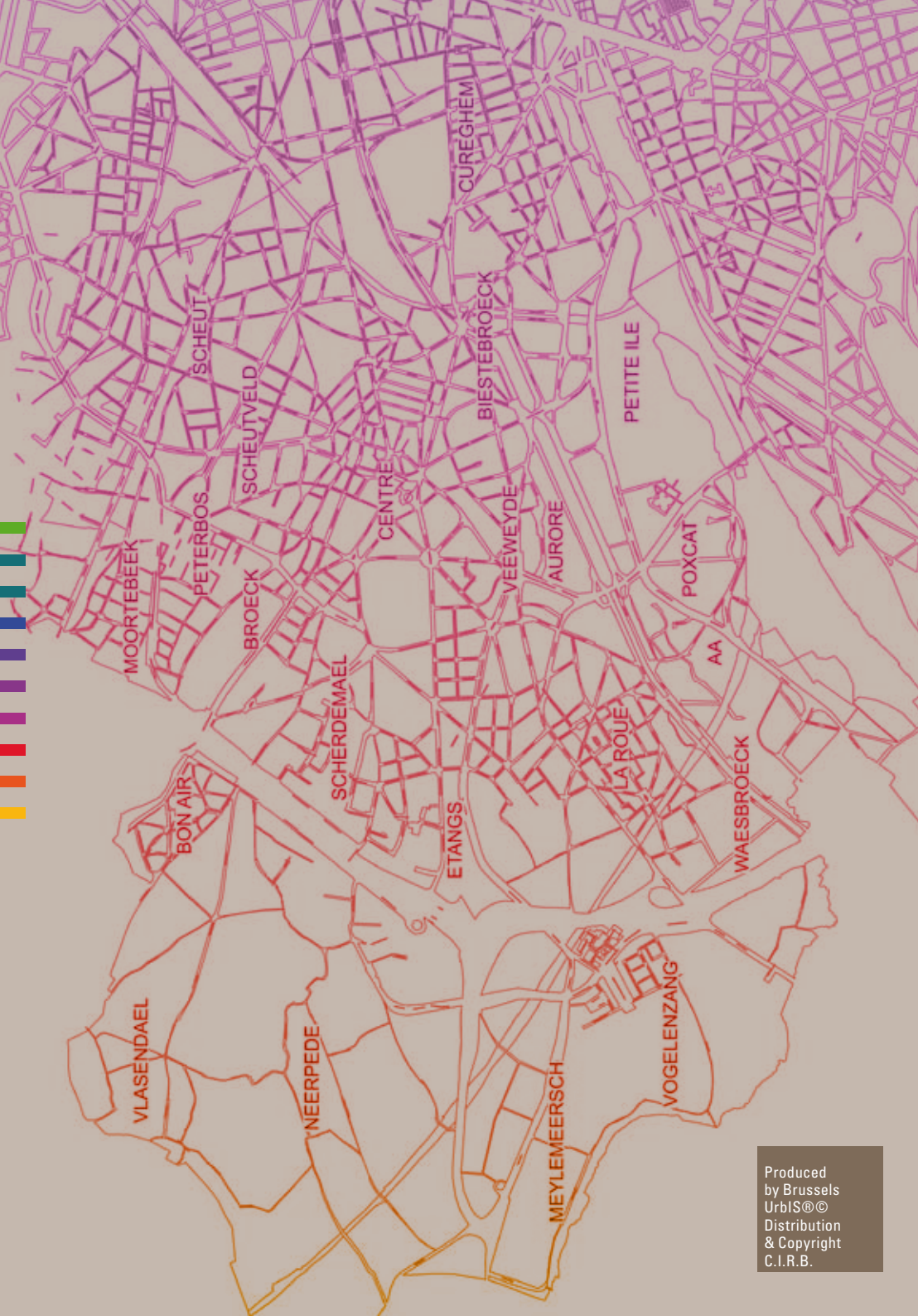
You will also be able to walk around these areas and discover our local folklore, our colourful markets where local products mix with exotic spices and flavours.

And lastly after a busy day, you will be able to recharge your batteries in one of our many restaurants or simply relax in the shade on a pleasant terrace.

I am sure that this charming description has whetted your appetite. I would like to wish you much pleasure, laughter and many pleasant memories.

**Have fun exploring our great commune!**





Produced  
by Brussels  
UrbIS©©  
Distribution  
& Copyright  
C.I.R.B.

## CUREGHEM

Since the 12th and 13th centuries, the place name of Cureghem has demarcated the eastern part of the commune, i.e. about 350 hectares, currently between the railway and the territory of the City of Brussels. It was the presence of the river Senne that boosted the economic development of Cureghem and of those industries linked to the river. From 1859, the local authorities of Anderlecht decided to create a middle-class quarter in Cureghem. In terms of architectural heritage, Cureghem is the richest depository of Anderlecht: roads, avenues and boulevards bear witness to the whole range of architectural styles which were popular throughout the 19th century and the beginning of the 20th century.

It is an extremely diverse quarter when it comes to architectural styles - eclectic façades, including neo-Gothic, Flemish neo-Renaissance, Art Nouveau and many others.

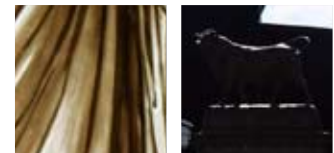
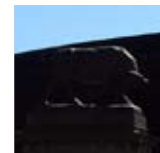
There are still several houses decorated with sgraffito, a Renaissance architectural decoration technique which went through a very popular revival in the Art Nouveau era.

Situated on the border of the city of Brussels, part of this quarter is known as "the Triangle". The area is commercial in nature and is nearly entirely dedicated to the fashion industry (wholesale garment industry). This activity developed here throughout the 20th century.

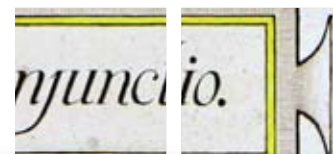
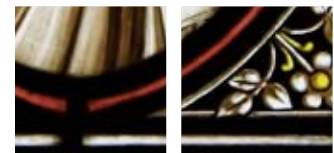
► Former  
"Prévoyance  
sociale"



► Gable  
neo-Renaissance



► Entrance to the  
slaughterhouses

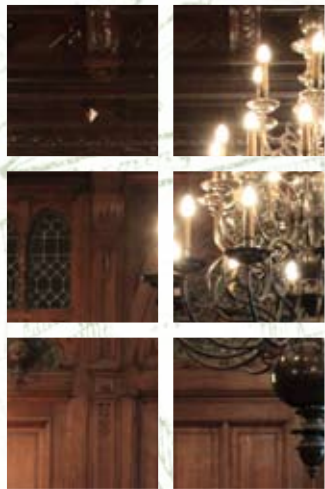


Metro Gare  
du Midi (South  
station) and  
Clémenceau,  
STIB Tram 81,  
Bus 46 (Albert)

► Stained glass  
window

TAKE A WALK ON THE ANDERLECHT SIDE





## TOWN HALL

The Town Hall of Anderlecht was designed by the architect Jules Jacques Van Ysendyck (1836 - 1901) in one of the most characteristic styles of the eclecticism movement, nowadays referred to as the Flemish neo-Renaissance. It was built in the period 1877 to 1879 and classified as a listed building in 1995.

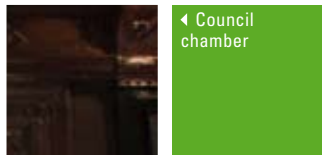
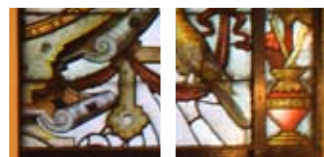
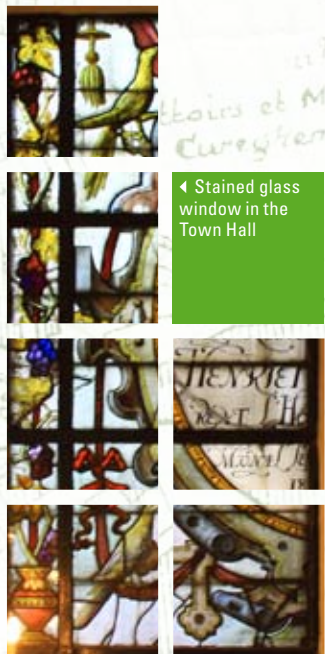
The width of the monumental façade covers five bays on three levels.

There is also a belfry in the centre. The square section and massive aspect is topped off by a pinnacle in the shape of an "Imperial bulb". Two loggias have been placed there. As a symbol of municipal freedom, the town hall displays the coat of arms of Anderlecht and is fitted with three clock dials.

High windows rise on either side of the belfry with mullions and crossbars. There are balconies on the outside mounted by pediments.

There are also two plaster copies of sculptures by Constantin Meunier: the Débardeur and the Semeur (the Logger and the Sower). The main staircase, decorated with a stunning cast iron stair rail, is illuminated by a large mullion bay window, striking for its coloured glass. Against this exuberant backdrop of arabesques and garlands, there are several panels with inscriptions recalling the construction and inauguration of the building. On the first floor, the vast central landing with zenith lighting gives access to offices and three equipment rooms situated at the front.

← Stained glass window in the Town Hall



← Council chamber

## Council chamber

When entering, the visitor is immediately struck by the relative penumbra of areas which highlight the windows and decor with sombre colours, black, brown and green. Our modern sensitivity is no longer used to interiors where the lighting is weak. The sculpted oak doors have been given pride of place in this room. The walls are covered with suspended mounted hangings painted with trompe d'oeil effects. The furniture consists of leather-covered armchairs and oak chairs decorated with the Anderlecht coat of arms. Marble busts, a harmonium and several large paintings complete the decoration.

## Board room

The major decorative element of this room is a monumental chimney in the shape of a fireplace, topped by a pyramid-shaped hood. This has been built against a rather sombre background where a battle scene has been painted and is framed by two bookcases. The mantle has the coat of arms of Brabant and is bordered by richly sculpted wooden frieze panelling. Enamel tiles on either side of the black plaque depict the allegorical figures of Air and Earth.

As in the Council chamber, the walls are covered with painted mounted wall hangings which imitate rich brocade drapes.

☞ Place du Conseil, 1  
| Metro Clémenceau and Gare du Midi  
STIB Tram 81 (Conseil)  
Bus 46 (Albert)

## THE ANDERLECHT CONCERTO: MONUMENTAL WALL PAINTING

This superb monumental work by Jean-Marc Collier decorates the 175m<sup>2</sup> wall of the Town Hall. It symbolises Anderlecht and its attributes: the Town Hall, the House of Erasmus, the Saint Guidon collegiate church, the Charleroi canal, a cat (symbol of the Veeweyde animal refuge), a balloon (emblem of Anderlecht football club) and the sign of the bull (slaughterhouses).

☞ Rue van Lint, 2  
| Metro Clémenceau  
STIB Tram 81 (Conseil)  
Bus 46 (Albert)

## LISTED MANSION

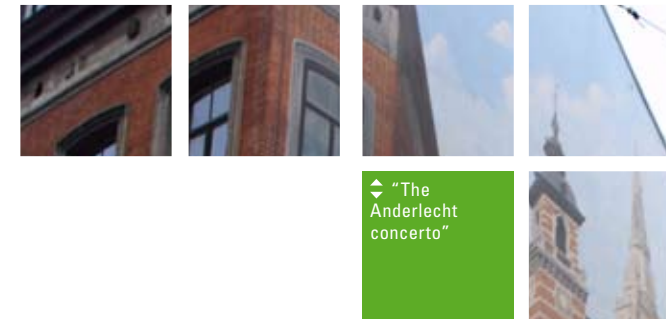
Built in 1906 and listed in 1994, this superb mansion with a wooden balcony and relief embellishment, shows the influence of Flemish neo-Renaissance. The façade is truly splendid, adorned all across its upper part with sgraffiti depicting pretty women, banners and heraldic symbols.

☞ Rue Georges Moreau, 170  
| Metro Clémenceau  
STIB Tram 81 (Conseil)

## FORMER VETERINARY SCHOOL OF CUREGHEM

The site is part of a series of pavilion dwellings, initially consisting of 19 buildings in the middle of gardens. All the façades are in neo-renaissance style. The administrative building, recognisable from its dome light which crowns the middle of its roof, used to house the administrative services, academic hall and library. On the second floor, the academic hall which, despite development as an auditorium, has preserved the essential element of its painted decor, a true reflection of its veterinary profession. There are several multi-point lightning conductors on the roofs of the former school. The Belgian physician, Louis Melsens, (1814-1886), taught at the Cureghem school and was also an inventor.

☞ Rue des Vétérinaires, 41-47  
| Metro Gare du Midi  
STIB bus 78 (Vétérinaires)  
site being renovated



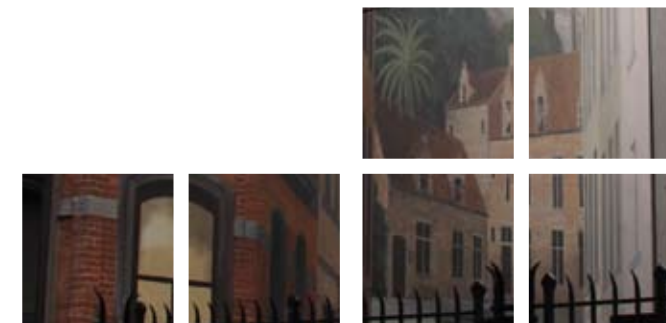
◆ "The Anderlecht concerto"

## NATIONAL MEMORIAL TO JEWISH MARTYRS

Built in 1968 and 1970, the whole memorial, which can be used as an open air synagogue, is surrounded by concrete walls covered in granite commemorative plaques where the names of 23 838 Belgian Jews are engraved who were deported from the Dossin barracks in Mechelen between 4 August 1942 and 31 July 1944 to the death camps. They never came back.

The general shape of the monument is an implicit reference to the symbolism of the Jewish religion. It represents a steel structure with inscriptions in Hebrew, French, Dutch and Yiddish which can be read near the entrance and a wall design in steel chains which has the appearance of a menorah.

☞ Square des Martyrs juifs  
| Metro Gare du Midi  
Tram 81 (Cureghem)





## SLAUGHTERHOUSES

The limited liability company "Abattoirs et Marchés d'Anderlecht-Cureghem" [slaughterhouses and markets of Anderlecht-Cureghem] was founded on 12 May 1888. The slaughterhouses and markets of Anderlecht were officially opened on 24 August 1890.

The company set up a gigantic cellar with a special ventilation system. It was first used as an ice refrigerator, then as a mushroom cultivation area before being changed in 1992 into trading rooms and reception rooms for banquets. The covered market is a monument to iron and glass architecture and is one of the most striking examples in the Brussels region.

The Anderlecht slaughterhouse was designed as a "city within the city" with streets (rue des Etables), a square (paved courtyard), a monument (the main market), blocks of buildings (air cooler, wholesale butchers' area, administrative building), and areas for trade and leisure (grocery shop, inn, etc.) and a railway station. The final specifications for construction of the covered market area specifies that 218 tonnes of cast iron and 640 tonnes of iron should be used.

The covered market is often presented as an example of revolutionary industrial architecture.

It has a square base plan 100 metres long, with a veritable forest of cast iron columns on capitals which rest on the arc-shaped metallic frame.

The two cast iron bulls of French manufacture decorate the monumental entrance.

Apart from the architectural and historical interest of the site, an immense completely covered market with an extensive range of merchandise is held every week from Friday to Sunday.

📍 Rue Ropsy-Chaudron, 24  
| Metro Clémenceau and Delacroix  
Bus 46 (Clémenceau)



▶ Iron bull at the entrance of the slaughterhouses



## TRIANGLE DISTRICT

### FORMER HEADQUARTERS OF THE SOCIAL WELFARE ASSOCIATION,

Now the Federal Public Department of Social Security – War Victims department – Archives and documentation department.

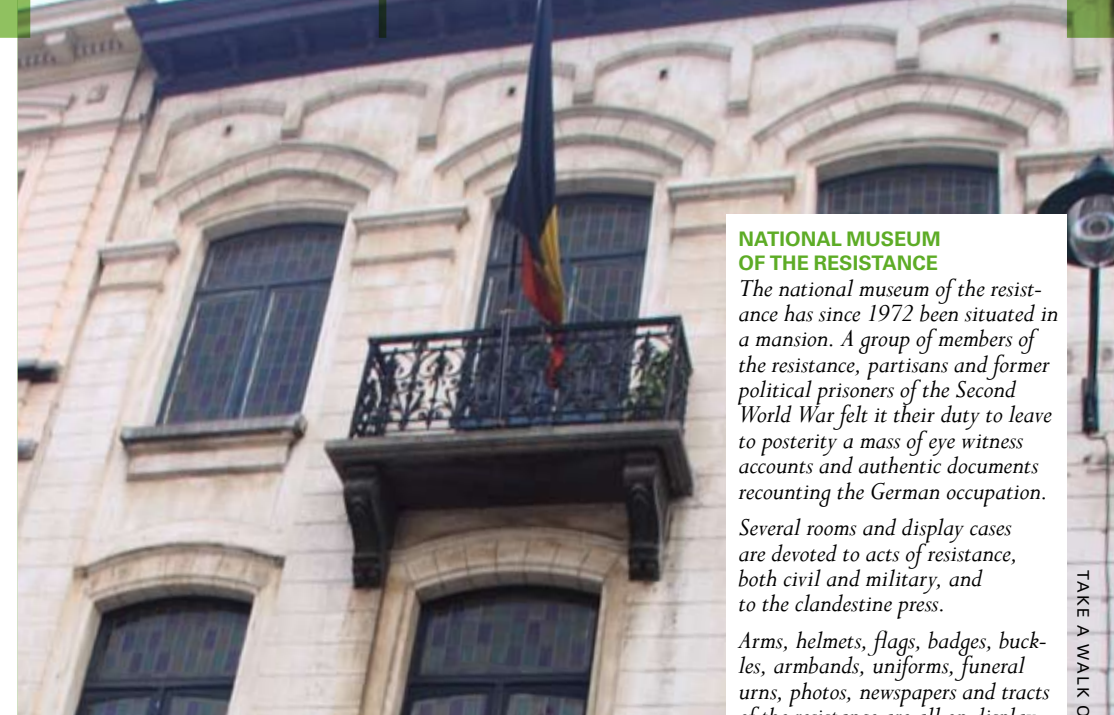
This building, in late Art Nouveau style and recently restored by the buildings department, was the headquarters of the Social Welfare department (listed in 1993). It now houses the Study and Documentation Centre of War and Contemporary Society, a federal scientific institution and the offices and archives of the War Victims department.

In 1911, the cooperative social welfare association "La Prévoyance Sociale" asked architect Richard Pringiers (1869-1937), who worked together with Victor Horta, to design plans for an office complex to be erected at square de l'Aviation. In 1930, the architects Fernand and Maxime Brunfaut were asked to transform the angled building which required the complete rearrangement of the interior and to add a new building in Art Deco style which was built in the period 1931-1932.

They were asked to preserve the Pringiers façade which they did by adding balconies with cast iron balustrades on the third and fourth floors and to place a glass dome on top of the building.

Brunfaut father and son not only designed the layout of the building, they also took care of the decoration and furniture up to the smallest detail (lighting, letterboxes, door knobs). Some of the furniture has been preserved including those of the director's office and meeting room and various other quality items.

📍 Square de l'Aviation, 29-31  
| Metro Gare du Midi



## MUSEUMS & EXHIBITION VENUE



### NATIONAL MUSEUM OF THE RESISTANCE

The national museum of the resistance has since 1972 been situated in a mansion. A group of members of the resistance, partisans and former political prisoners of the Second World War felt it their duty to leave to posterity a mass of eye witness accounts and authentic documents recounting the German occupation.

Several rooms and display cases are devoted to acts of resistance, both civil and military, and to the clandestine press.

Arms, helmets, flags, badges, buckles, armbands, uniforms, funeral urns, photos, newspapers and tracts of the resistance are all on display.

Part of one room shows the horrors of the Nazi concentration camps.

📍 Rue Van Lint, 14  
| Metro Gare du Midi or Clémenceau  
STIB Tram 81 (Van Lint)  
Bus 46 (Albert)

- ❖ Practical information  
Monday, Tuesday, Thursday and Friday, from 9 am to 12 pm and from 1 pm to 4 pm. Wednesday subject to reservation.  
Guided tours on appointment (minimum 30 persons)  
Archives – Documentation centre - Library
- ❖ Entrance fee: free of charge
- ❖ Information  
Tourism Information Anderlecht  
Rue du Chapelain 1 – 7  
1070 Anderlecht  
T: 02 526 83 65  
tourism@anderlecht.irisnet.be  
www.anderlecht.be
- ❖ National Museum of the Resistance  
Rue Van Lint, 14 - 1070 Anderlecht  
T / F: 02 522 40 41 - resistance.verzet.widerstand.antifa@skynet.be





### BRUSSELS GUEUZE MUSEUM – BRASSERIE CANTILLON

The Brussels Gueuze Museum is a family brewery where lambic, gueuze and kriek (cherry) beers are brewed.

Authentic, traditional and friendly, Brasserie Cantillon invites visitors to explore the world of the Brussels brewing industry of the 19th century. The machines and brewing processes are of this era. Visitors can, depending on when they visit the museum, assist in preparing a brew, bottling, cleaning the vats or preparing the fruit.

☞ Rue Gheude, 56  
 | Metro Gare du Midi  
 Trams 3 et 4 (stop Gare du Midi or Lemonnier)  
 81 (stop Place Bara)

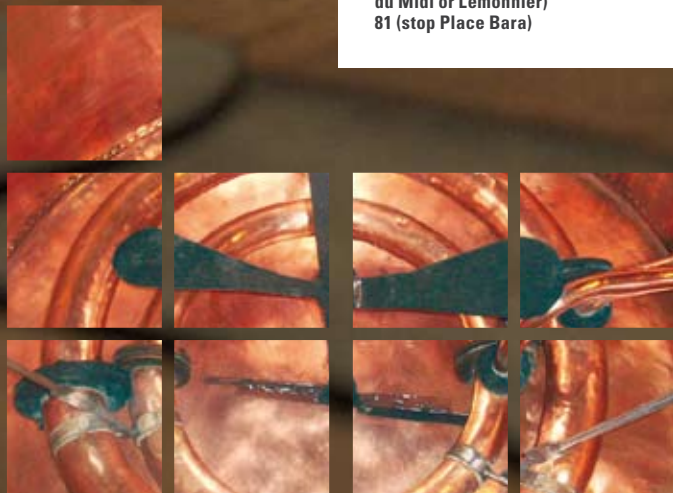
❖ **Practical information**  
 From Monday to Friday, from 9 am to 5 pm, Saturday from 10 am to 5 pm. Closed on Sundays and public holidays.

The building has three floors with stairs and is therefore difficult to access for people with reduced mobility.

The entrance ticket includes a tasting at the end of the visit. Guided tours for groups can be arranged on request.

❖ **Renseignements**  
 Tourism Information Anderlecht  
 Rue du Chapelain 1 – 7  
 1070 Anderlecht  
 T: 02 526 83 65  
[tourism@anderlecht.irisnet.be](mailto:tourism@anderlecht.irisnet.be)  
[www.anderlecht.be](http://www.anderlecht.be)

❖ **Brussels Gueuze Museum – Brasserie Cantillon**  
 Rue Gheude, 56  
 1070 Anderlecht  
 T: 02 521 49 28 F: 02 520 28 91  
[info@cantillon.be](mailto:info@cantillon.be)  
[www.cantillon.be](http://www.cantillon.be)



► Detail of a plan of Buchenwald © SDR



### FEDERAL PUBLIC DEPARTMENT OF SOCIAL SECURITY (SPF) War Victims department: Archive and documentation department

The SPF has since 1944 been collecting archives which are now 13 kilometres long and contain general documentation about wars and conflicts of the 20th century and the repercussions these had on Belgium. Here you can find information about political prisoners, the persecution and deportation of Jews and gypsies, forced labour and personal files (files from 1914-1918, files relating to status and national recognition and files from the archive and documentation department). These documents are accessible for research providing certain conditions relating to privacy of the victims are met. Books from the library may only be consulted on appointment and after submission of a written request.

☞ Square de l'Aviation, 31  
<http://warvictims.fgov.be>  
[archidoc@minsoc.fed.be](mailto:archidoc@minsoc.fed.be)  
 T: 02 528 91 57  
 F: 02 528 91 75

### EXHIBITION VENUE

#### LA BOUTIQUE CULTURELLE

☞ Rue Van Lint, 16  
 T: 02 522 62 35  
[info@boutiqueculturelle.be](mailto:info@boutiqueculturelle.be)  
[www.boutiqueculturelle.be](http://www.boutiqueculturelle.be)

## ENTERTAINMENT

### WEEKLY MARKETS

#### MIDI MARKET

This market is the second largest in Europe after the one in Vintimiglia in Italy. Around 450 clothing and food sellers ply their trade here. The market is held around the South station, at the intersection of the municipalities of Saint-Gilles and Anderlecht.

☞ Avenue Fonsny  
 | Metro Gare du Midi  
 All STIB trams that stop at Lemmonier and at the Gare du Midi, also applies to all buses  
 ❖ Every Sunday morning to 1.30 pm

#### SLAUGHTERHOUSE MARKET

Apart from the historical and architectural interest of the site, this extremely large and completely covered market has a very large range of products.

☞ Rue Ropsy Chaudron  
 | Metro Clémenceaux or Delacroix  
 T: 02 521 54 19 – [info@abatan.be](mailto:info@abatan.be)  
[www.abatan.be](http://www.abatan.be)  
 ❖ Every Friday and Saturday all day and on Sunday until 2 pm

## EATING OUT

### LOCAL DISHES

#### LA PAIX

This charming restaurant is situated in the slaughterhouse district. The presentation is meticulous and the service excellent. Meat specialities.

☞ Rue Ropsy Chaudron, 49  
 T: 02 523 03 58  
 F: 02 520 10 39

❖ Open from Monday to Friday, from noon to 7.30 pm and on Friday night from 7 pm to 9.15 pm.

■ Credit cards, bancontact and meal vouchers accepted.  
 Average price for a meal: € 65

#### CHEZ MARIA

Traditional restaurant founded in 1950 which has a top-quality Franco-Belgian cuisine. Speciality - red meat.

☞ Avenue Clémenceaux, 50  
 T: 02 521 31 99  
[chezmaria@skynet.be](mailto:chezmaria@skynet.be)

❖ Open from Monday to Friday, from noon to 2.30 pm and from 7 pm to 9.30 pm.  
 Credit cards and meal vouchers accepted.  
 Average price for a meal € 40

► The covered market of the slaughterhouses





## ACCOMODATION

### HOTELS

#### BE MANOS\*\*\*\*

Exceptional hotel in the five-star Boutique hotel design category – Executive and junior suites.

Very centrally situated to explore the heart of the European capital, a stone's throw from Midi station and the two largest markets - the Midi market and the Slaughterhouse market. Also near the Gueuze Museum (Cantillon). Free transport to and from Midi station for hotel guests.

☎ Square de l'Aviation, 23-27  
T: +32 (0)2 520 65 65  
F: +32 (0)2 520 67 67  
stay@bemanos.com  
www.bemanos.com

❖ 60 rooms  
Average price of rooms, € 140 per day at the weekend and from € 140 to € 445 per day during the week

#### FLORIS USTEL\*\*\*

Very centrally situated to explore the heart of the European capital, a stone's throw from Midi station and the two largest markets - the Midi market and the Slaughterhouse market. Also near the Gueuze Museum (Cantillon).

☎ Square de l'Aviation, 6-8  
T: +32 (0)2 520 60 53  
F: +32 (0)2 520 33 28  
reservations@florishotels.com

❖ 114 rooms  
Average price of rooms from € 70 to € 245 per day. Entirely renovated, three-star hotel with large rooms (up to five guests)

#### APART HOTEL BRUXELLES-MIDI\*\*\*

☎ Rue Bara, 161  
T: +32 (0)2 528 70 00  
F: +32 (0)2 528 70 01  
info@brusselsmidi.com  
❖ 27 apartments  
Average price of studios € 50 to € 250 per day

#### SCANDINAVIA\*\*\*

Modern, three-star hotel with restaurant open from 6 pm to 10 pm. Traditional French cuisine. Average price of a meal € 27. Very centrally situated to explore the heart of the European capital, a stone's throw from Midi station and the two largest markets - the Midi market and the Slaughterhouse market. Also near the Gueuze Museum (Cantillon).

☎ Chaussée de Mons, 115-117  
T: +32 (0)2 221 02 00  
F: +32 (0)2 221 02 01  
info@scandinaviahotel.be  
www.scandinaviahotel.be  
❖ 50 rooms  
Average price of rooms € 80

#### HOTEL VAN BELLE\*\*\*

Three-star hotel with a restaurant famous for its cuisine whose price-quality ratio is very reasonable. Very centrally situated to explore the heart of the European capital, a stone's throw from Midi station and the two largest markets - the Midi market and the Slaughterhouse market. Also near the Gueuze Museum (Cantillon).

Authentic, typically Brussels hotel situated 1 200 metres from the well-known Grand' Place. A free shuttle service will drop you off there in the evening.

☎ Chaussée de Mons, 39  
T: +32 (0)2 521 35 16  
F: +32 (0)2 527 00 02  
reservation@hotelvanbelle.be  
www.hotelvanbelle.be  
❖ 105 rooms  
Average price of rooms, from € 70 to € 100

### BED & BREAKFAST

#### AVIATION 19

Situated in the heart of Brussels, this bed and breakfast is a 90m<sup>2</sup> penthouse on the sixth floor in a Parisian-style building. The veranda has a view of the Atomium and the Basilica of Koekelberg. A unique experience!

☎ Square de l'Aviation, 19  
T: +32 (0)494 82 35 20  
mail@aviation19.be  
www.aviation19.be  
❖ Approximate price: € 100 per day for two people, including breakfast. 1 apartment: bedroom, living room, bathroom, toilet, terrace and veranda.

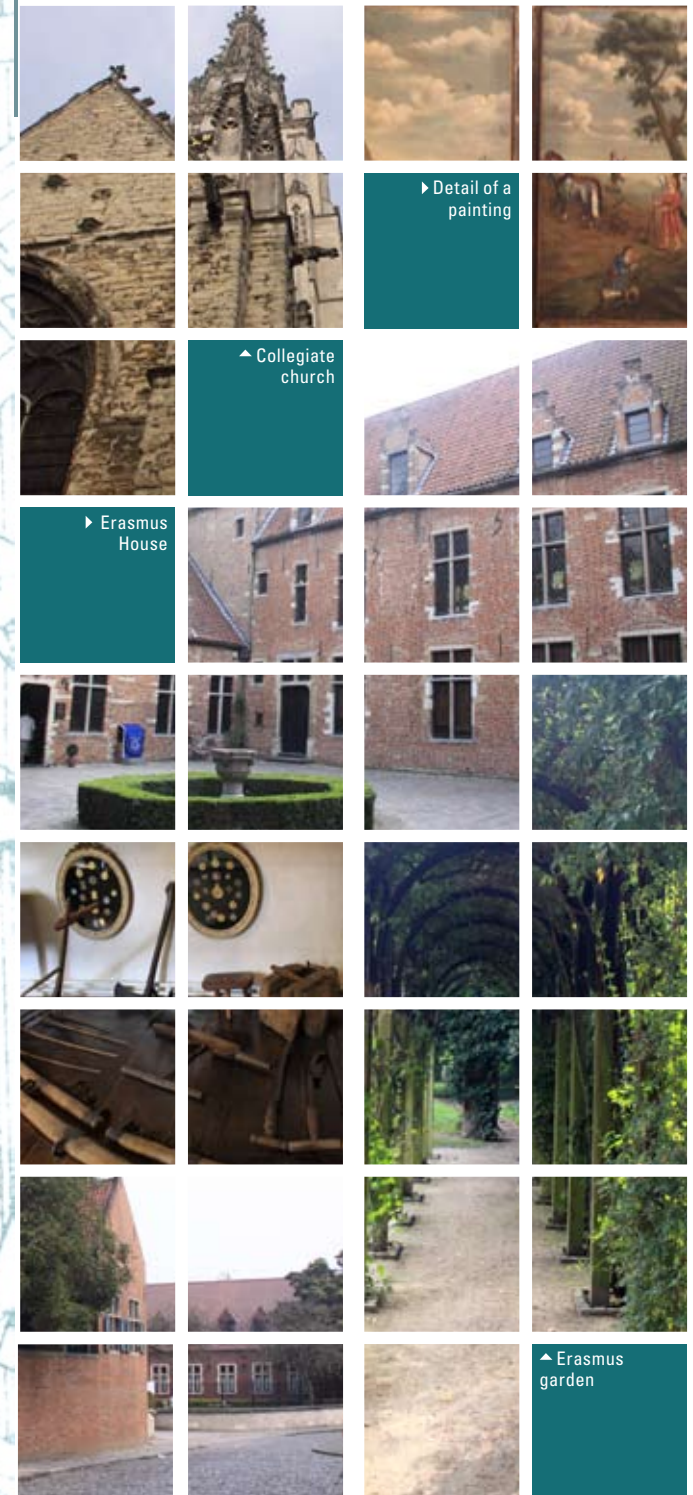
#### B&B LES HABITATS NOMADES

Rooms in Art Deco, design or comic strip style. Situated a stone's throw from the centre of the city, this establishment is in the immediate vicinity of all the Cureghem places of interest, the two largest markets in Brussels - the Midi market and the Slaughterhouse market and near the Gueuze Museum and the Resistance Museum.

☎ Rue de l'Instruction, 108  
T: +32 (0)2 646 07 37  
F: +32 (0)2 644 01 14  
info@BnB-Brussels.be  
www.BnB-Bruxelles.be  
❖ Approx. price: see website 3 rooms one of which can accommodate four people.

## CENTRE: DE RINCK HISTORIC HEART

The "Rinck" is the former village of Anderlecht. The historic centre of Anderlecht expanded around the Collegiate churches of Saint Pierre and Saint Guidon which were erected in the 11th century. This part of the commune was only linked to Cureghem in 1878 via the rue Wayez. Several commercial centres border the Rinck. There also many typically Brussels bistros and restaurants which display menus with local specialities.



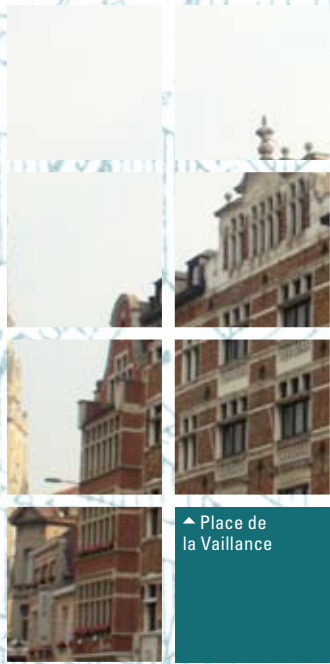
Metro Saint-Guidon Line 5, Tram 81, Bus 46, De Lijn 118

► Facade of the Beguinage

► Facade of the Beguinage

► Facade of the Beguinage





### PLACE DE LA VAILLANCE

In the past, this square was the village square of Anderlecht and was called the Place de la Plaine. In the period 1910-1920, this square was considerably expanded.

On 8 May 1911, the local council laid down that “the façades erected on the place de la Plaine should be inspired by the styles of the 16th, 17th and 18th centuries to avoid too much discrepancy with the church of Saint Guidon. Furthermore, all façades will be constructed with local materials and must have an indisputable architectural character”.

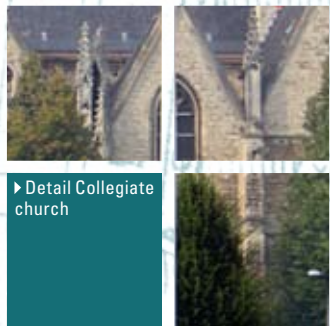
From 1912 onwards, these “pastiche” houses proudly displayed their baroque gables.

A second wave of housing construction (from 1923 to 1928) followed the reshaping of the public area where a monument to the war hero, Victor Voets, was inaugurated on 28 May 1922.

Old buildings which go back to the end of the 18th century and used as cafés-brasseries such as “les Tréteaux” and “t Paviljoen” still exist. At the corner of the place and the rue du Chapitre is an extremely old construction (1700) which served as an inn for many years.

The Place de la Vaillance is the spot for fans of sunny terraces and good quality food.

| Metro Saint-Guidon (Line 5)  
 STIB Tram 81 (Saint-Guidon)  
 Bus 46 & 49 (Erasmus House)



► Detail Collegiate church

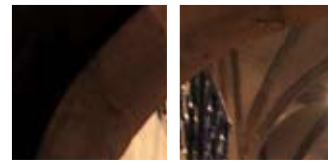
► Monument to the dead  
© Annick Dedobbeleer



### MONUMENT TO THE DEAD

This monument is the work of local sculpture Victor Voets, erected in memory of soldiers and those killed in battle, political prisoners and the deported who died during the First World War. It was inaugurated on 28 May 1922. A woman symbolises the commune of Anderlecht who covers two men, a soldier and a civilian, decorated war victims. All around there are the names of soldiers from Anderlecht who died for their country.

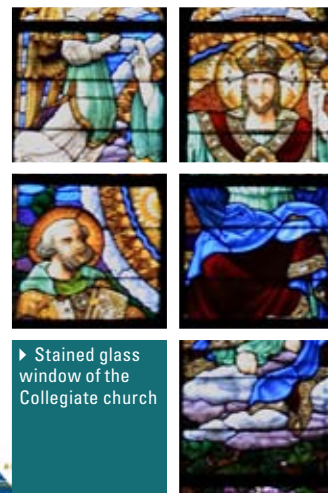
| Metro Saint-Guidon (Line 5)  
 STIB Tram 81 (Saint-Guidon)  
 Bus 46 & 49 (Erasmus House)



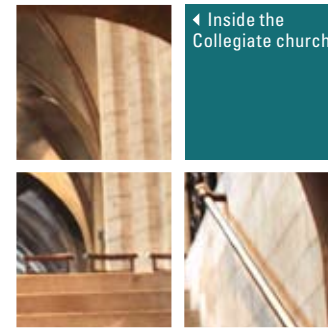
### COLLEGIATE CHURCH OF SAINT PETER-PAUL AND GUY

The collegiate churches of Saint Pierre and Saint Guidon, a listed monument, are examples of Romanesque and Gothic architecture. The origin of these churches goes back to the 10th and 11th centuries.

An imposing Romanesque church dedicated to Saint Pierre was erected at the end of the 11th century and the beginning of the 12th century. A well-preserved crypt was found among the remains of the Romanesque church. This is accessible by a staircase on both sides of the choir entrance. These staircases were renovated at the end of the 19th century. A tombstone often thought of as the “tomb of Saint Guidon” was placed between two of these columns. This is generally thought to date back to the 11th century. The supports on which the flagstone rests allows for a narrow passage into which, according to tradition, pilgrims slid their wishes and prayers to the saint. This was a type of rite of passage. The wear and tear of the stones show that this tradition was practised for a long time.



► Stained glass window of the Collegiate church



◀ Inside the Collegiate church

The construction of the Gothic collegiate church took place between 1350 and 1527, the result of several reconstruction attempts. The gothic building as we see it today mainly dates from the Burgundy period and was built in the shape of a Latin cross.

During restoration work carried out inside the church at the end of the 19th century, several wall paintings were uncovered. The collegiate church of Anderlecht has the most important collection of wall paintings in the Brussels region dating back to the 15th and 16th centuries.

The oldest stained glass window dates from the last quarter of the 15th century. The influence of the Flemish school of painting is particularly evident here. This is one of the oldest glass windows still intact in Belgium.

◀ Place de la Vaillance  
 T: 02 523 02 20

| Metro Saint-Guidon (Line 5)  
 STIB tram 81 (Saint-Guidon)  
 Bus 46 & 49 (Erasmus House)  
 De Lijn, bus 116, 117, 118



◀ Facade De Rinck

### FORMER VANDENPEEREBOOM PROPERTY

In 1890 Jules Vandenpeereboom, Railways, Post and Telegraph Minister, purchased a property situated on the place de la Vaillance, opposite the collegiate church square, on which the 16th-century Canon's house was situated. He had it demolished to make room for a new building which was perfectly restored as a typical 16th century construction.

Consisting of three buildings dating from different periods, the living quarters and former paved courtyard have been preserved as well as the old well from where there used to be a secret passageway which still exists today in part, topped by beautiful art iron work, a copy of a work kept in the Cluny Museum in Paris.

This house and annexes currently house the Academie voor Beeldende Kunsten (Academy for the Visual Arts) of the Dutch-speaking district of Anderlecht. For more information, see [www.academieanderlecht.be](http://www.academieanderlecht.be)

◀ Place de la Vaillance, 17  
 | Metro Saint-Guidon (ligne 5)  
 STIB Tram 81  
 Bus 46 & 49 (Erasmus House)  
 De Lijn bus 116, 117, 118

❖ Entry free of charge from 10 am to 12.30 pm and from 1.30 pm to 4.30 pm





### FORMER DE SWAENE INN (DE RINCK)

This former 17th-century inn has a bluestone frame around the front door. With its typical façade, this middle-class building is an interesting example of urban history.

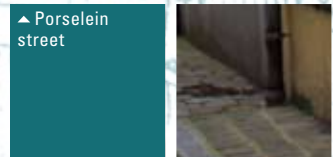
- ☛ Place de la Vaillance, 6, 7
- ▮ Metro Saint-Guidon (line 5)
- ▮ STIB Tram 81 (Saint-Guidon)
- Bus 46 & 49 (Erasmus House)
- De Lijn bus 116, 117 & 118

### PORSELEIN STREET

This site was listed in 1998. The origin of its name is still contested but the most likely source is an allusion to purslane (“postelein” in Dutch), a plant with small, fleshy leaves, a species of which was grown as a vegetable.

Some façades of rue Porselein lend themselves to the Poetry in the City initiative, produced by “Hypothesarts” whose intention was to turn the street into a permanent exhibition area. Painters and poets are represented here in no particular order. Number 15 is a homage to the painter Miro, on texts written by Jacques Prévert, while 28 represents the works of Picasso.

▲ Porselein street



### ESPACE MAURICE CARÊME

This building houses several departments of the municipal administration of Anderlecht including the library and toys and games library.

The ceiling painting of the Owen Room is striking and represents the four elements, a 66m<sup>2</sup> pyramid-shaped painting by the Anderlecht painter, Pierre Wattiez Watch, is displayed at the Anderlecht cultural centre. A painter from the fantastic school, his work is a composition representing the four elements of fire, water, air and earth, dominated by chrysalides which change into butterflies. Apart from these four elements, a technological depiction on the fresco represents the impact of mankind on the world. The whole work is bathed in warm and peaceful colours.

In the garden, you can admire the “Bouquet of light columns” by the contemporary sculpture, Maurice Frydman, consisting of 200 stainless steel columns, three metres high. Every summit is played to reflect the sky and to encourage viewers to make their own imaginative creations.

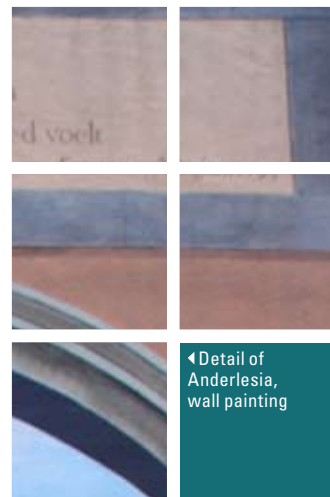
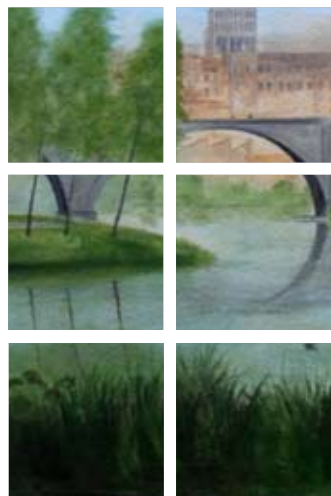
- ☛ Espace Maurice Carême
- Rue du Chapelain 1-7
- ▮ Metro Saint-Guidon
- ▮ STIB tram 81 (Saint-Guidon)
- bus 49 (Erasmus House)



### JUSTICE OF THE PEACE COURT

On the place de la Résistance (formerly, Place Wayez) there is a public monumental building. The Justice of the Peace Court is neo-Renaissance in style and was inaugurated on 15 February 1897. The industrial and economic prominence enjoyed by the commune at the end of the 19th century was rewarded by a decree of 27 May 1890 designating the district as the headquarters of the legal district of the justice of the peace court.

The courtroom on the first floor is a masterpiece of interior decoration of the end of the 19th century in the Brussels region. It has a striking



◀ Detail of Anderlesia, wall painting

ceiling supported by elegantly decorated steel joists and fitted with all the fixtures and fittings suitable for the decorum required for a marginal court. Large windows decorate the bays on the first floor.

The names of the municipalities which were part of the original Anderlecht district appear on the pediment which crowns the central section. The coats of arms of these entities are shown in the upper part of every pier.

- ☛ Place de la Résistance, 3
- ▮ STIB Tram 81,
- ▮ Metro Saint-Guidon
- Bus 46 & 49



▶ Sgraffite found on rue de la Démocratie

### ANDERLESIA: THE LARGEST WALL PAINTING IN BRUSSELS

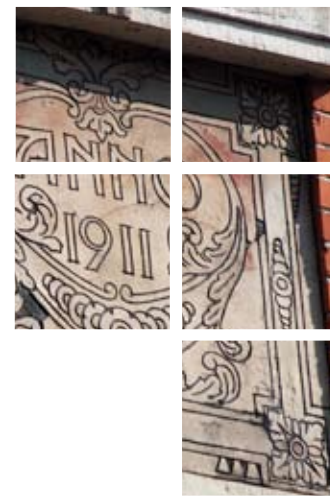
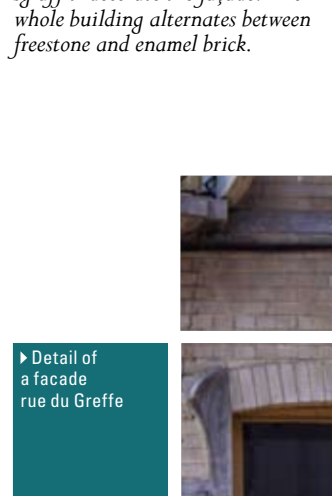
This monumental fresco, measuring 1 000m<sup>2</sup>, is the work of Jean-Marc Collier. It is the largest wall painting in the Brussels region. Four floors, cut through by doors and windows, are painted on a gable. Two figures seem to be scaling the façade to expose false arcades which recount the history of Anderlecht.

- ☛ At the level of 30, 31 & 32 of rue Victor Rauter
- ▮ STIB Tram 81 (Résistance)

### TWO BUILDINGS CONSTRUCTED BY THE FOYER ANDERLECHTOIS

These social apartment blocks, of extremely good quality, were designed by the architect Jean-Baptiste Maelschalk (1862 – 1937) and built in 1910, as the plaques on the central bay of the building at number 58 indicate. This building is striking by its beauty reflected in its pilaster columns which end in rounded arches. Magnificent sgraffiti decorate the façade. The whole building alternates between freestone and enamel brick.

▶ Detail of a facade rue du Greffe



The Art nouveau inspiration of numbers 64-66 is in particular characterised by the shape of a large arc which overhangs the side door and windows of the ground floor and by the curved cornice.

In the same street at number 96, it is worth noticing a small, stylish building built in 1927 and designed by the architect O. Van Roye.

- ☛ Rue de la Démocratie, 58 & 64-66
- ▮ Metro Saint-Guidon, STIB tram 81 (Saint-Guidon), bus 46 & 49 (Erasmus House)







◀ Facade and garden of medicinal plants at the Erasmus House



❖ **Practical information**  
**Opening hours**  
 Every day except Monday, from 10 am to 5 pm. Closed on 25 December and 1 January. Rue du Chapelain, 8 1070 Anderlecht

❖ **Entrance fee**  
 € 1.25 (Erasmus Museum & Beguinage). Free of charge for children under 6 and for members of Icom, AFMB, VMV and Friends of Erasmus House  
 The museum shop is accessible free of charge. There you will find catalogues, brochures, postcards, publications about the Renaissance, Humanism and the Reformation

❖ **Access**  
 By car: Take the ring road, exit 14 "Pede Moortebeek", then take Bd Sylvain Dupuis, second traffic lights: sign pointing to Erasmus House.  
 By train: From Midi station (T.G.V.). Tram 8: direction: "Marius Renard", Saint Guidon stop or bus 49, direction Bockstael, Formanoir stop.  
 From Central station, metro line 5, direction Erasmus, Saint Guidon stop.  
 By metro: Line 5, direction Erasmus, Saint Guidon stop.  
 Ground floor wheelchair accessible.

❖ **Information**  
 Tourism Information Anderlecht  
 Rue du Chapelain 1 – 7  
 1070 Anderlecht T: 02 526 83 65  
 tourism@anderlecht.irisnet.be  
 www.anderlecht.be

❖ **Erasmus Museum**  
 Municipal museums of Anderlecht  
 Rue du chapitre, 31 1070 Anderlecht  
 T: 02 521 13 83 F: 02 527 12 69  
 info@erasmushouse.museum  
 www.erasmushouse.museum

▶ Entrance to the philosophical garden



**A PHILOSOPHICAL GARDEN**

The garden of Erasmus is a garden of pleasure and knowledge and was the first garden of medicinal plants designed by landscape gardener René Pechère (1987).

In this garden of diseases, a true botanical portrait of the humanist, there are about one hundred plants from the 16th century used by Erasmus to cure himself.

Behind this main garden, there is a second garden which is like the garden of all gardens - a philosophical garden to help one think about the world.

Inspired by the text *The Religious Banquet*, written by Erasmus after his stay in Anderlecht (1521), a series of cartographic flowerbeds were created in which the visitor can admire the plants and flowers that Erasmus contemplated during his many journeys which turned him into the first great European.

Garden of the body and garden of the world, this garden provides a series of philosophical chambers created by contemporary artists which are as much invitations to sit down to pass the time or to discuss matters with friends because, as Erasmus reminds us, "Where they are friends, there is wealth" (*Ubi amici, ibi opes*).

❖ **Practical information**  
**Opening hours**  
 Every day except Monday, from 10 am to 5 pm. Closed on 25 December and 1 January. Rue du Chapelain, 8 1070 Anderlecht

❖ **Entrance Fee**  
 Free of charge

❖ **Access**  
 By car: Take the ring road, exit 14 "Pede Moortebeek", then take Bd Sylvain Dupuis, second traffic lights: sign pointing to Erasmus House.  
 By train: From Midi station (T.G.V.). Tram 8: direction: "Marius Renard", Saint Guidon stop or bus 49, direction Bockstael, Formanoir stop.  
 From Central station, metro line 5, direction Erasmus, Saint Guidon stop.  
 By metro: Line 5, direction Erasmus, Saint Guidon stop.  
 Wheelchair accessible

❖ **Information**  
 Tourism Information Anderlecht  
 Rue du Chapelain 1 – 7  
 1070 Anderlecht T: 02 526 83 65  
 tourism@anderlecht.irisnet.be  
 www.anderlecht.be

❖ **Erasmus Museum**  
 Municipal museums of Anderlecht  
 T: 02 521 13 83 F: 02 527 12 69  
 info@erasmushouse.museum  
 www.erasmushouse.museum



▲ The Pierre Portier bench in the philosophical garden



▶ "Le volcan de vie" by Bob Verschuieren

**MUSEUMS**

**ERASMUS HOUSE**

The Erasmus House is one of the oldest gothic style houses in Brussels (1460-1515). Pieter Wijchmans, the canon of Anderlecht, opened up his home to his friend Erasmus from May to October 1521. He came to rest and to "play the peasant" as the writer Guillaume Budé put it.

The museum shows the life of the Dutch Humanist and the intellectual world of the Reformation through old works (engravings or paintings by Holbein, Jerome Bosch or Dürer, among others) displayed against the backdrop of Gothic and Renaissance furniture.

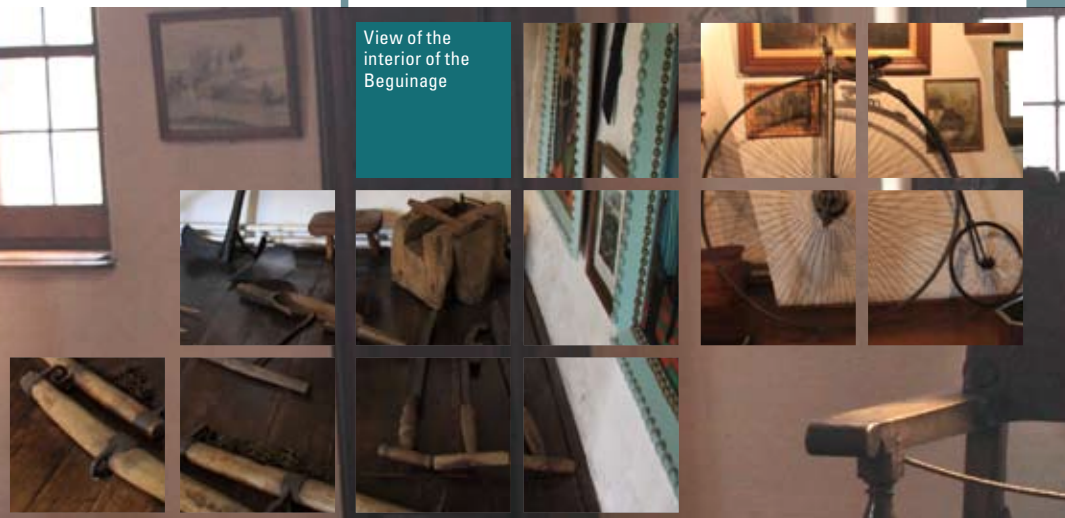
The visitor will find details of the intellectual and family world of the great philologist and theologian, a supporter of tolerance and an impartial arbiter.

The museum's collection includes paintings, many ancient works retracing the thoughts of this exceptional mind which deeply marked western civilisation mainly through his masterpiece "In praise of folly".





View of the interior of the Beguinage



### THE BEGUINAGE

Erasmus House and the Beguinage are two of the oldest municipal museums in Belgium. Together with the collegiate churches of Saint Pierre and Saint Guidon, they form a high-quality historical entity. These buildings recall the glorious past of the municipality of Anderlecht which experienced major expansion in the Middle Ages, on the one hand due to the cult of Guidon, the patron saint of cattle and, on the other, due to its location on the great pilgrim route to Santiago de Compostela.

In 1252, thanks to a donation from a canon, a small beguinage of eight women was set up in the shadow of the collegiate churches.

The museum was established in 1930 in one of the smallest beguinages in Belgium where only eight women resided at any one time. The buildings consist of two wings, one from the 16th century and one from the 18th century, around a charming closed garden built in the 16th century from where you get a view of the Gothic collegiate churches of Saint Pierre and Saint Guidon. The buildings house archaeological collections, religious art and popular art tracing the thousand year history of Anderlecht.

#### ❖ Practical information

##### Opening hours

Every day except Monday, from 10 am to 5 pm. Closed on 25 December and 1 January. Rue du Chapelain, 8 1070 Anderlecht

#### ❖ Entrance fee

€ 1.25 (Erasmus Museum & Beguinage). Free of charge for children under 6 and for members of Icom, AFMB, VMV and Friends of Erasmus House

#### ❖ Access

**By car:** Take the ring road, exit 14 "Pede Moortebeek", then take Bd Sylvain Dupuis, second traffic lights: sign pointing to Erasmus House.

**By train:** From Midi station (T.G.V.). Tram 8: direction: "Marius Renard", Saint Guidon stop or bus 49, direction Bockstael, Formanoir stop.

From Central station, metro line 5, direction Erasmus, Saint Guidon stop.

**By metro:** Line 5, direction Erasmus, Saint Guidon stop.

Ground floor wheelchair accessible

#### ❖ Information

Tourism Information Anderlecht  
Rue du Chapelain 1 – 7  
1070 Anderlecht  
T: 02 526 83 65  
tourism@anderlecht.irisnet.be  
www.anderlecht.be

#### ❖ Erasmus Museum

Municipal museums of Anderlecht  
Rue du Chapitre, 31 1070 Anderlecht  
T: 02 521 13 83  
F: 02 527 12 69  
info@erasmushouse.museum  
www.erasmushouse.museum



### LES AMIS DE LA MORALE LAÏQUE D'ANDERLECHT (THE FRIENDS OF SECULAR ETHICS)

Rue de Veeweyde, 38  
T / F: 02 520 39 99  
aml.anderlecht@yahoo.fr

### BIBLIOTHÈQUE DE L'ESPACE MAURICE CARÈME

Rue du Chapelain, 3-7  
T: 02 526 83 30 F: 02 527 04 57  
emca1070@yahoo.fr  
www.emca.be

### 'T KOTJE

Rue Porselein, 5  
T: 02 521 65 37

### MAISON DES ARTISTES

Monthly exhibitions throughout the year (except for July and August)

Rue du Bronze, 14  
T / F: 02 521 91 48  
Maisonartistes@anderlecht.irisnet.be  
www.anderlecht.be  
STIB Tram 56 (Douvres)

### MAISON D'ERASME

Rue du Chapitre, 31  
T: 02 521 13 83 F: 02 527 12 69  
info@erasmushouse.museum  
www.erasmushouse.museum

### GEMEENSCHAPSCENTRUM DE RINCK

Dapperheidsplein 7  
T: 02 524 32 35 F: 02 522 34 87  
derinck@vgc.be

### ZINNEMA

Rue de Veeweyde, 26-28  
T: 02 555 06 00 F: 02 555 06 10  
info@vca.be - www.vca.be

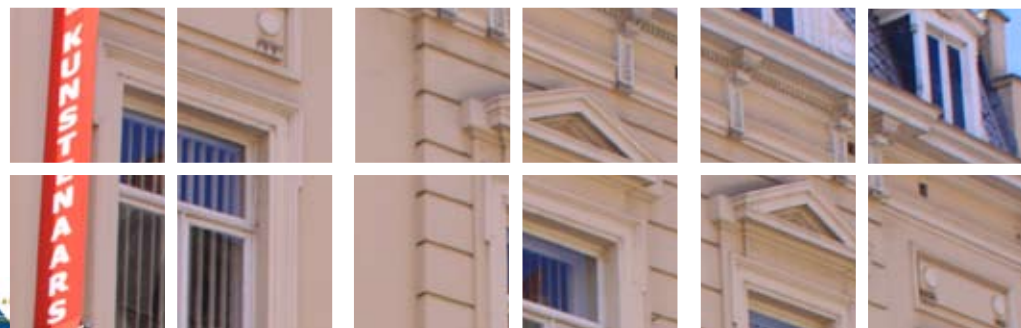
### GALERIE VERTIGE

Rue de Veeweyde, 60  
T: 02 523 37 68 F: 02 524 65 61  
vertige.crit@equipe.be  
www.galerievertige.be

## EXHIBITION VENUES

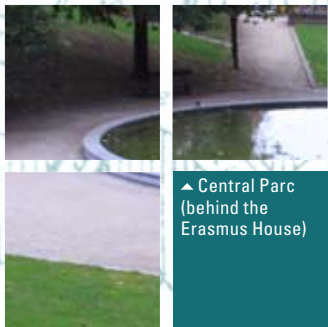
Metro Saint-Guidon  
STIB Tram 81 (Saint-Guidon)  
Bus 46 & 49 (Erasmus House)  
(see practical information)

Facade of the Maison des Artistes



TAKE A WALK ON THE ANDERLECHT SIDE





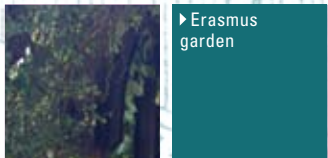
▲ Central Parc (behind the Erasmus House)

## PARK

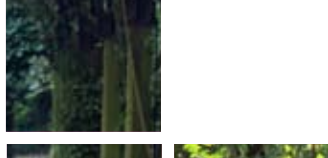
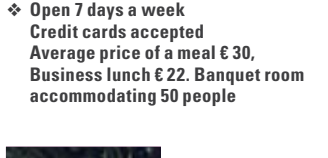
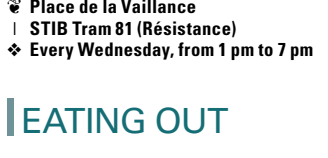
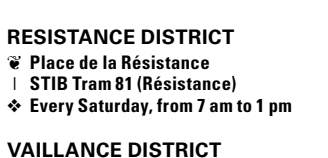
### PARC RAUTER

In this street, at numbers 30, 31 and 32, do not miss the largest wall painting in the whole region! This monumental fresco, measuring 1 000m<sup>2</sup> is the work of Jean-Marc Collier. Four floors high are painted on a gable cut through with doors and windows. Two figures seem to be scaling the façade to expose trompe l'oeil false arcades which illustrate the past of the old hamlet of Bistebroek and the surrounding countryside.

- ☞ Rue Rauter, Chaussée de Mons
- ☞ STIB Tram 81 & Bus 46 et 49
- ☞ Playground



▶ Erasmus garden



## ENTERTAINMENT

### WEEKLY MARKETS

#### AUMALE DISTRICT

- ☞ Rue d'Aumale & Place du Repas
- ☞ Métro Saint Guidon & Aumale
- ☞ STIB Tram 81, Bus 46 (Erasmus House)
- ☞ Every Friday morning, from 7 am to 1 pm

#### RESISTANCE DISTRICT

- ☞ Place de la Résistance
- ☞ STIB Tram 81 (Résistance)
- ☞ Every Saturday, from 7 am to 1 pm

#### VAILLANCE DISTRICT

- ☞ Place de la Vaillance
- ☞ STIB Tram 81 (Résistance)
- ☞ Every Wednesday, from 1 pm to 7 pm

## EATING OUT

### LOCAL DISHES

#### LE CHAPEAU BLANC

- ☞ Rue Wayez, 200
- T: 02 520 02 02 F: 02 520 90 08
- lechapeaublanc@proximedia.be
- www.lechapeaublanc.be
- ☞ Open 7 days a week
- ☞ Credit cards accepted
- ☞ Average price of a meal € 30,
- ☞ Business lunch € 22. Banquet room accommodating 50 people

#### LA TRIBUNE

- ☞ Rue Wayez, 189
- T / F: 02 522 02 20
- ☞ Open 7 days a week
- ☞ Credit cards, Bancontact and meal vouchers accepted.
- ☞ Average price of a meal, from € 10 to € 20

#### LES TRÉTEAUX

- ☞ Rue Porselein, 4
- T: 02 527 46 66
- ☞ Open every working day and Saturday evening
- ☞ Credit cards, Bancontact and meal vouchers accepted
- ☞ Average price of a meal € 20

#### LE BÉGUINAGE

- ☞ Place de la Vaillance, pedestrian zone
- T: 02 523 08 44
- ☞ Open every day except Monday in winter. Credit cards, Bancontact and meal vouchers accepted
- ☞ Average price of a meal from € 20 to € 30. Play area for children and pleasant terrace

#### FRITURE RENÉ

- ☞ Place de la Résistance, 14
- T: 02 523 28 76
- ☞ Open every day except Monday evening and Tuesday
- ☞ Average price of a meal € 30

## ACCOMODATION

#### B&B DÉMOCRATIE

In a quiet area to the west of Brussels, the owners extend a warm welcome to their home. The owner is very knowledgeable about the city and will happily tell you all you want to know. Local market, restaurants and many shops in the vicinity. An entirely renovated apartment is available. Excellent breakfast. Well located for public transport.

- ☞ Rue de la Démocratie, 70
- T: +32(0)2 646 07 37
- F: +32(0)2 644 01 14
- info@BnB-Brussels.be
- ☞ 2 twin rooms - TV - kitchenette, shower and private toilet.
- ☞ Approx. price: € 55 per night

## CENTRE: LE MEIR

The Meir district started to develop around 1910. It is one of the most beautiful districts of the commune with stunning Art Deco architecture enhancing green and pleasant areas. A city walk for lovers of architecture who can take a break to admire the views in Astrid Park.

▶ Astrid Park



▶ Art deco stained glass window



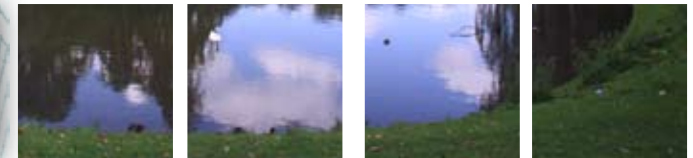
▲ Details of a facade art deco "Anderlechtsoise"  
▼ Art deco bas-relief



▲ Detail of "cascatelles" in Astrid park

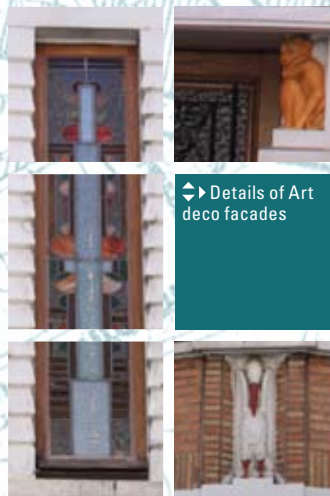


▶ Pond in the Astrid park



Metro Saint-Guidon, STIB Tram 81 (Meir) Bus 49 (Meir or Veeweyde)



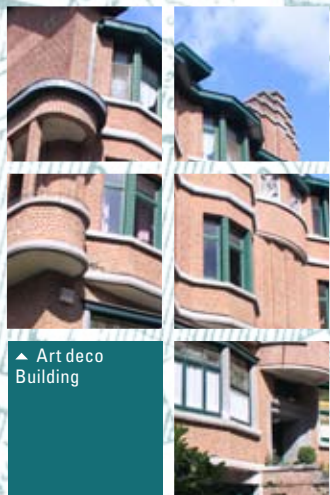


Details of Art deco facades

## PLACES OF INTEREST

### THE MEIR DISTRICT: A TRIUMPH OF ART DECO

The Meir district is a reflection of the willingness of the local authorities in the 1930s to develop top quality architecture in a green area. The whole district is full of artistic influences of the inter-bellum period. The walk is breathtaking. Below are a few addresses:



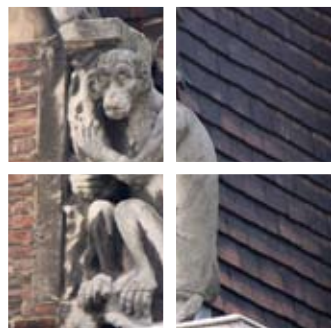
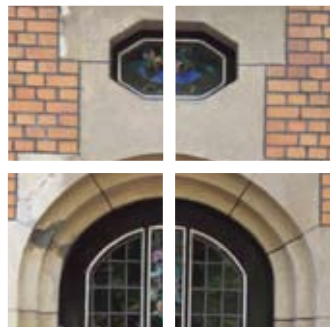
Art deco Building



**Avenue Bertaux:** No. 14: two jigs frame the central gable. At No. 62: very refined brick façade, bas-relief of a toddler playing with a bird's nest. Superb windows.

**Avenue Gounod:** Nos. 23-25: façades demarcating successive waves of loggias, interesting geometry and volumes.

**Avenue Gounod:** No. 36: beautiful example of the urban cottage style. A window depicting a basket of flowers. No. 38: traditional gable on the verge of modernity, decorated in black and white tiles, triglyphs and Cubist sullen muscle man – No. 75: A traditional basket of fruit and flowers at the crest, entrance door is framed by two horns of plenty, pretext for an abundance of roses – No. 93: beautiful example of late Art Deco, magnificent bow window, double metallic entrance door with stylised clouds and geometric to the extreme.



**Avenue Paul Janson:** No. 70: mansion built in 1925. No. 74: highly structured façade, iron work, stained glass windows, under the mosaic porch is a lovely wall box decorated with a faun that was meant to protect milk bottles. This box was fitted with a light which was lit to indicate to the milkman that he could deliver the milk. No. 76: dating from 1927, overflowing with roses in every corner, on fasteners, window frames, windows, hexagonal bulls eye window and bow windows. No. 78: built in 1925, arched porch right in the centre, resting on two Tuscany columns, porch with rounded shapes, pretty gardens and wrought iron grills. No. 80, striking polychrome tiling, rose garlands, carriage entrance and lantern mixing wrought iron and American glass. No. 81, mansion which vies between Art Deco and Beaux-Arts style. No. 84, the most beautiful example of Beaux-Arts style in the district. No. 86, the sashes and windows are original, decorated with Flemish bond in turquoise blue, American glass. No. 98, built in 1926, façade of fine bricks dominated by white horizontal lines, geometric windows where the triangle is the dominate theme, decorative bas-relief.

Art deco porch

Details of Art deco facades



### Rue Guillaume Lekeu:

No. 4: house built in 1939 in "passenger ship" style with portholes, very sombre and modernistic construction.

**Avenue Limbourg:** No. 2-2A: two villas built back to back, dating respectively from 1927 and 1929. No. 2 has a beautiful door under a canopy, No. 2A, a bas-relief showing a sword and scales, symbols of justice – Nos. 15-17: twin houses dating from 1924, decorative motifs: owls placed under the cornice and at the transoms of the entry doors, remarkable ironwork combining utility and aesthetics, No. 21: mansion dating from 1928, elegant, tapered façade, emphasised by fine and monumental vertical lines. No. 27: ironwork influenced by the Viennese Secession, cottage style. No. 48: striking entrance – Nos. 52-54: a set of two houses from 1925, cottage style, picturesque houses with typical windows and woodwork, both entrances characterised by an arch in the centre resting on a large pelican and two Doric columns, small pelicans decorate the two gables. No. 53: house built in 1928 in very modernistic Art Deco style, the décor is limited to two discrete small columns and a small gilded bas-relief representing a nude, kneeling woman, with a boy's hairstyle, holding a bouquet of flowers and a torch.

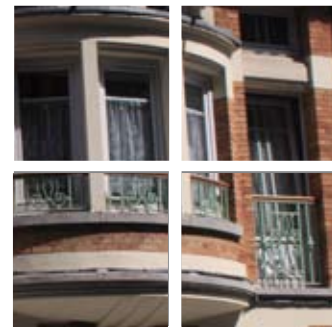


**Rond point du Meir:** No. 4: frieze panel of sunflowers with coloured flowers.

**Avenue Nellie Melba:** No. 3 and No. 14 (Maurice Carême Museum)

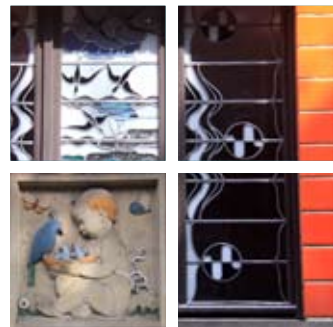
**Rue de la Procession:** No. 109: all the windows are original in yellow glass and decorated with flowers, mainly roses – No. 127: a witness to the expansion of the area, opal glass, made at the beginning of the 1920s in Ronquière.

**Avenue du Roi Soldat:** No. 6: house dating from 1926 with horizontal and vertical frieze panels and a few decorations inspired by the Viennese Secession. No. 8: traditional design, highlighted by daring coloured woodwork, windows in American glass imitating alabaster, small African-style columns. No. 18: the door is a jewel: the ironwork seems to flirt with the plate glass. Chiselled, it has a garland of climbing plants and roses. An enormous basket of roses and daisies complete the picture. No. 26: apartment building whose octagonal bay is decorated with a very pretty glass window showing an exotic bird nesting in flowering branches.



**Rue Edgar Tinel:** No. 27: bas-reliefs, futuristic, geometric glass windows, pretty entrance porch, mosaics and granito wrought iron low gate. No. 36: paring of original glass windows in green, ochre and yellow tones which decorate all the bays. No. 40: striking entrance porch: canopy crowned with a fleur de lys and a frieze panel of vegetation, wrought iron green, mosaic threshold, genuine polychrome entrance mat.

**Rue Louis Van Beethoven:** No. 41: to the right of the wrought iron door, a wise old owl, on an hourglass and surrounded by books. No. 60: animals in the concave part of the façade: a white stork with a red beak, two small orange monkeys, pretty bas-reliefs depicting stylised sunsets. Note that this house is called *My Dream*?





► View of Astrid park



**Rue de Veeweyde: No.61:** cottage characterised by imagination. Two monkeys hanging from tree branches.

**Rue Henri Vieuxtemps: No.16:** enormous mansard roof creating a pastoral setting, a bow window and a splendid bowl of fruit.

**Avenue Eugène Ysaÿe: No.23:** built later in 1932, large villa with an elegant entrance porch. No.29: surprising villa dating from 1930 in brick and Tyrolean parqing, elaborate roofing, mixture of cottage style and Italian Renaissance elements. No.33: large villa constructed in 1930 in very refined cottage style - a bit kitsch. No.54: built in 1931 with a glass window with several Masonic signs - compass, angle, and five-sided star. No.55: highly structured façade decorated with two massive balconies, very attractive geometric windows. No.89: very sober modernistic style house, splendid stylised basket of fruit at entrance door.

► Metro Saint-Guidon  
STIB Tram 81 (Meir)  
Bus 49 (Meir or Veeweyde)

### ASTRID PARK AND CONSTANT VANDEN STOCK STADIUM (Royal Sporting Club Anderlecht)

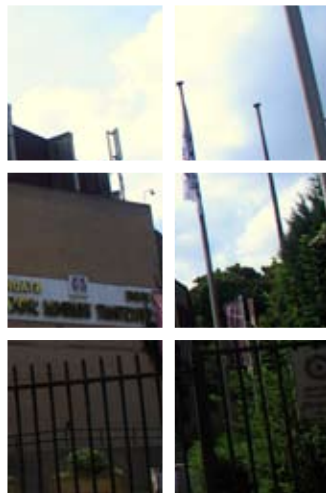
For Astrid Park, see under "Parks" below

#### Football at Astrid Park

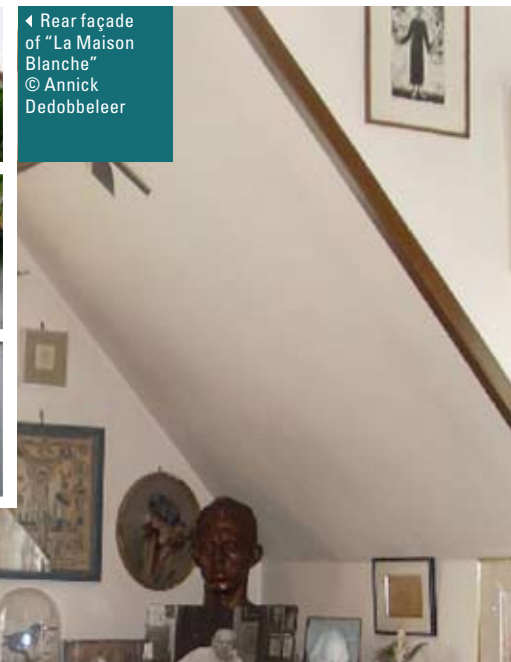
The club was established on 27 May 1908 on the initiative of Charles Roos. The pitches were made available at Astrid Park for the benefit of Sporting Club Anderlecht on 18 May 1914. In 1920, the first wooden stands were erected on the football pitch. In 1933, Sporting was elevated to the rank of a royal club. The 1980s were marked by several phases of modernisation of the stands to become the current Vanden Stock Stadium.

► Avenue Théo Verbeek, 2  
► Metro Saint-Guidon or Veeweyde  
STIB Tram 81 (Meir)

► Entrance to the Football stadium of Sporting Club Anderlecht



◀ Rear façade of "La Maison Blanche"  
© Annick Dedobbeleer



## MUSEUM

►► Details of Maurice Carême's study  
© Annick Dedobbeleer



### MAURICE CARÊME MUSEUM

This museum preserves the life of the poet with his furniture, his old dinner plates, his works of art (Belgian painting and sculptures) intact. It is full of portraits of Maurice Carême and drawings which illustrated the poet's collected works.

The White House was built in 1933 to resemble the house in Brabant where the poet was born.

An archive room specially set up to preserve the heritage of the Maurice Carême Foundation, contains all the poet's works, manuscripts, written, sound and audiovisual documents, works that were translated and set to music (more than 2,150 music scores out of the 2,600 still played today), the photo library, map collection (created by the poet), films devoted to Maurice Carême, an immense correspondence, and a library specialised in poetry from all over the world.

A walk will lead you to "In the footsteps of Maurice Carême in Anderlecht", see chapter on themed walks

► Avenue Nellie Melba, 14  
1070 Bruxelles

❖ Practical information  
Guided tours only by appointment.  
Reservations by phone on 02 521 67 75.  
Researchers and university students are welcome for their literary research projects

❖ Access  
Trams: 81 (until 8 pm) 31 (after 8 pm)  
Bus 46, 75, 89 and 118  
Metro: Veeweyde or Saint Guidon

❖ Information  
Tourism Information Anderlecht  
Rue du Chapelain 1 – 7  
1070 Anderlecht T: 02 526 83 65  
tourism@anderlecht.irisnet.be  
www.anderlecht.be

❖ Maurice Carême Foundation  
Avenue Nellie Melba, 14  
1070 Anderlecht  
T: 02 521 67 75 F: 02 520 20 86 jeannine.burny@numericable.be  
The museum is not accessible for those of reduced mobility





## ASTRID PARK

The creation of Astrid Park, representing a major step in the urban development of the commune and its history, not only revives the transformation of a former rural middle-class area into a large and popular central garden but also the progressive development of the whole which gradually developed between the historical centre of Anderlecht and the leafy hamlet of Neerpede, to become the Meir district with its residential housing in Art Deco style. Astrid Park was the result of a purchase by the municipality of the Ruelens rural zone and other adjacent private lots. It was officially opened on 13 August 1911. Plots of land were added up until 1928. In 1926, the College of Aldermen asked Jules Buysens to draw up a blueprint for the park at Meir. The rather hilly landscape and existence of a pond which was dug after the war, inspired Buysens to multiply the views from the water's edge of the island, vegetation and fauna. The trees and bushes are planted on large, undulating lawns which offer very changeable views of various

scenes in the park. In the 1950s, buildings with a social purpose were added including the Queen Fabiola pavilion, the fishermen's shelter and a playground.

There are a few beautiful statues including one of Prosper-Henri Devos, Jules Rühl, the founder of Veeweyde animal shelter and a very attractive Art Deco bust of a sitting woman and, to top it all off, small cascades.

- ❖ Rond-Point du Meir, Square Rombaux (corner of avenue du Roi Soldat & Avenue E. Ysaÿe), Avenue V. & J. Bertaux
- ❖ Metro Saint-Guidon, STIB Tram 81 & Bus 49 (Meir stop)
- ❖ Playground (2 to 12 years): rope walks, equipment on springs, combined structures, bowling and a stretch of smooth water

## ENTERTAINMENT

### CAFÉ LA RUCHE

- ❖ Place de Linde, 27
- T: 02 523 86 37 F: 02 376 46 08
- info@militis.be

### SAINT-GUIDON SNOOKER CLUB SAINT-GUIDON TAVERNE

- ❖ Rue Saint-Guidon, 106-110
- T: 0476 60 97 27

### ROYAL SPORTING CLUB ANDERLECHT

- ❖ Avenue Theo Verbeeck, 2
- www.rsca.be
- ticketing@rsca.be
- Facebook: RSC Anderlecht

❖ The Heart of Astrid park

## EATING OUT

### LOCAL DISHES

#### ALAIN CORNELIS

Restaurant in a traditional and welcoming setting. There is an interesting selection of dishes and reliable advice on wine.

- ❖ Avenue Paul Janson, 82
- T: 02 523 20 83
- www.alaincornelis.be
- ❖ Open every day except Wednesday evening, Saturday lunch and Sunday. Credit cards and meal vouchers accepted. Average price of a meal, € 32 to € 47€. Lunch € 22

#### A LA GRÂCE DE DIEU

Restaurant with a calm atmosphere opposite Astrid Park. The owner is on hand to provide recommendations. Fresh lobster tank. The garden is open in good weather.

- ❖ Avenue Eugène Ysaÿe, 46
- T: 02 523 33 27 / 0477 72 26 13
- F: 02 522 11 70
- maxrob.leonard@skynet.be
- www.alagracededieu.be
- ❖ Closed Sunday night and Monday
- Credit cards accepted
- Average price of a meal € 30

#### LE SAINT GUIDON

Restaurant with a star. Extensive business and gastronomic menus. Fans of football and food will not be disappointed. Closed in July.

- ❖ Avenue Théo Verbeeck, 2
- T: 02 520 55 36
- www.saint-guidon.be
- ❖ Open every day of the week at noon except if Sporting Anderlecht is playing. Credit cards accepted



## ACCOMODATION

### THE BRUSSELS HOUSE

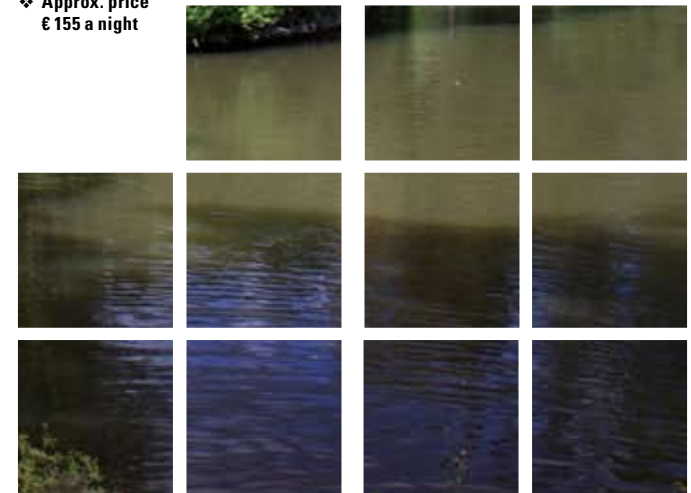
Situated in a very quiet and green area, this bed and breakfast in pure Art Deco style is extremely comfortable. It blends style and elegance with the principles of Feng Shui. There are two rooms with appropriate names - Zen and Long Island. It is not far from the historical centre of Anderlecht

- ❖ Avenue Eugène Ysaÿe, 33
- T: +32(0)475 69 10 00 (Tilly)
- T: +32(0)475 78 71 58 (Alex)
- F: +32(0)2 524 63 63
- thebrusselhouse@skynet.be
- www.thebrusselhouse.be
- ❖ Approx. price € 155 a night

### RÉSIDENCE ERASME

Situated in a very green area, this apartment-hotel belongs to Hotel Erasmus. A double apartment is available to accommodate up to eight people.

- ❖ Avenue Eugène Ysaÿe, 86
- T: +32(0)2 523 62 82
- F: +32(0)2 523 62 83
- info@hotelerasme.com
- www.hotelerasme.com
- ❖ Approx. price € 80 per night for a weekly rental



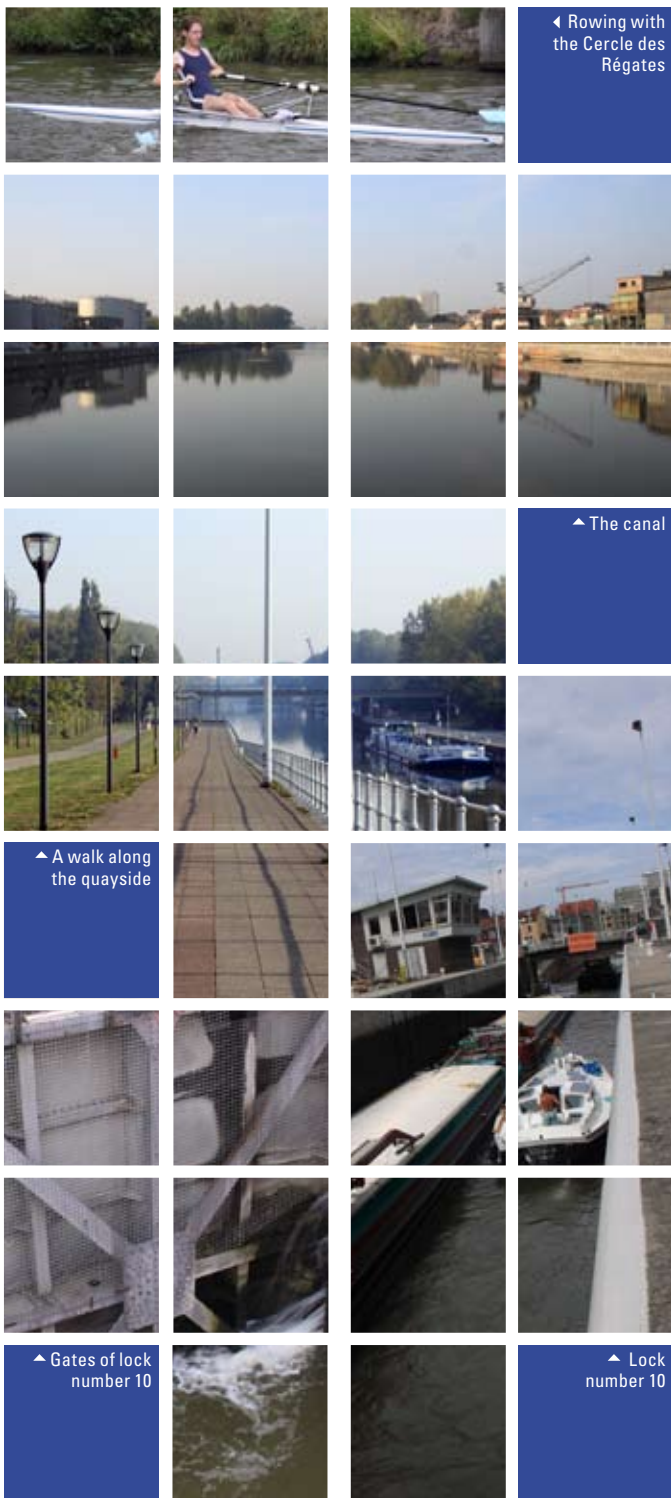


# CHARLEROI CANAL From Biestebroek to Waesbroeck

The Charleroi canal is a large construction capable of taking boats of 1 350 tonnes. Construction of the canal started in 1827 and it was officially opened in 1832. Over time, the canal experienced development and major expansion in the middle of the 19th and 20th centuries thanks to breweries, tanneries, textile industries and other industries set up in the vicinity. The water comes mainly from the river Sambre and from the l'Eau d'Heure lake.

Nowadays, the decline of industrial activity and competition from the roads and railways have left deep scars such as disused and abandoned industrial buildings in the urban landscape.

Nevertheless, there are still river activities going on at Biestebroek, to judge from the port cranes. The basin of Batelage provides walkers with a landscape of canal boats which are moored all year round where bargemen and lovers of life on the river have permanent residence. The canal has tow paths on both sides which are popular with walkers and cyclists.



◀ Rowing with the Cercle des Régates

▲ The canal

▲ A walk along the quayside

▲ Gates of lock number 10

▲ Lock number 10

## PLACES OF INTEREST

### INDUSTRIAL HERITAGE OF THE CHARLEROI CANAL

Large breweries and milling plants were set up alongside the canal where the cereals needed to brew beer were available. It was the Saint Guidon brewery, which was built in 1912 near the canal on the rue du Libre Examen et de l'Aiguille, which took the name Atlas Brewery in 1924.

The Moulart milling plant was erected in 1903 and was completed by a second building in 1940. Lastly, various industries that were coal-dependent were set up along the waterway. For instance, the central electricity plant was built by the Brussels Tramways Association in 1903.

These three buildings, which are listed, bear witness to former industrial activities inspired by the presence of the Charleroi canal.

A walk along the canal is said to be very pleasant along the water edge and to explore Belgium's industrial history.

### ATLAS BREWERY

The Saint Guidon brewery was built in 1912 on the "Petit-Moulin" site which had been in existence since the 14th century at what was known as "Op-Cureghem" The brewing and fermentation rooms and the cellars date from this period.

Several iron or cement vats can still be seen on the first floor.

In 1924, a whole series of annexes were constructed - stables, offices, a saddlery and rinsing and racking rooms.

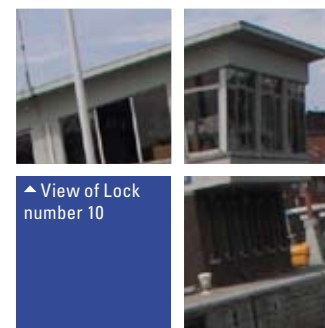
The façades of the offices and stables are visible from the rue du Libre Examen where they practically occupy a whole side.

In 1926 the 30-metre brewery tower was built which can be seen from far away. This also applies to the canal embankments and the bridge of Cureghem.

This tower is the perfect example of how the industry used advertising to reinvent itself. It is also an exceptional example of a construction technique (cement frame filled in with bricks) associated with the new process of brewing beer known as "cascade" where each of the seven steps of the tower correspond to a step of this brewing process. The brewery stopped operating in 1952.

Several years ago, the Atlas brewery was bought by the Emmaüs community (the "La Poudrière" non-profit making association) which currently occupies the buildings.

📍 Rue du Libre Examen, 13  
| Metro Aumale



▲ View of Lock number 10

### FORMER MOULART MILL

In 1903 the first building of the Moulart flour mill was built by Léon Moulart. In his time, in the period 1930-1940, this cylindrical mill employed around 30 people and ran 24 hours a day, six days a week. Every day it produced about 80 tonnes of flour for bakeries.

Moulart mill was one of three mills whose buildings still exist in Brussels. It stopped its operation in 1955 when the owners, faced with competition from the large milling plants along the maritime canal, accepted the compensation offered by the government to close the mill. Used for jam production until the end of the 1980s, the buildings are now used as tyre depots.

📍 23 Quai Fernand Demets  
| STIB Tram 81 (Cureghem)  
& Bus 46 (Cureghem)







## ELECTRICITY PLANT

In 1903, the Brussels tramways association had a large electricity plant constructed. At the time, this was a particularly modern and efficient plant. It corresponded to the start of the supply of electricity which can be seen in monumental buildings of very great technical and architectural quality which signified progress and the future. The site has several buildings most of which have been preserved - the former central plant, the coal silos, the paved inner courtyard, the manager's house and a monumental staircase on top of a very attractive stone balustrade. The electricity plant was set up alongside the canal to have access to coal. In addition, the canal supplied the water required for steam condensation after use.

The former electricity plant nowadays serves as a building for the maintenance of the rails and the network switch point of the STIB, the Brussels bus, tram and metro organisation.

- ☞ Quai Demets 33
- ☞ STIB Tram 81 (Cureghem)
- ☞ Bus 46 (Cureghem)

## AA SITE - FORMER Aoust FACTORIES

The remains of the hydraulic installations of AA island are the only witnesses to the period that the Brussels region used water power from the river Senne for industrial purposes. Here, the Senne is still open. Along the banks, there are still some walled market gardens with groups of huts. The banks of the river, in a semi-natural state, were constructed from grassy slopes with varied vegetation and typical water course fauna (green-neck ducks, moorhens, etc).

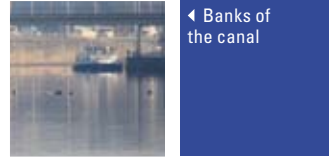
AA island is an artificial island created by bypassing the Senne. The river reaches from the railway bridge and the fork at the upstream weir, up to the bridge over the Paepsem downstream, and is one of the last remnants of the semi-rural landscape of the Senne. In the upstream part of AA island, there is a beautiful alignment of poplar trees which recall the typical former landscapes of these regions.

## LOCK NO.10

Built around 1930, this lock is fitted with a system to open hydroelectric gates managed by lock keepers. Since 1990, the Société du Canal et des Installations Maritimes de Bruxelles has been responsible for managing the lock.

How it operates: Lock keepers are in charge of regulating river traffic on the upstream and downstream banks of the canal and to operate the lock. They get information about the movement of boats leaving the preceding locks and provide advice. They keep a log of the arrivals and departures of boats in the region. Going through a lock takes 15 minutes.

- ☞ Linking the AA quay to the Veeweyde quay (Waesbroeck district)



← Banks of the canal

## PARK

### BIESTEBROECK PARK

Situated near the canal (lighterage basin), this is a quiet park with a view opposite of the canal dike with inhabited canal boats.

- ☞ Rue Rauter, Chaussée de Mons
- ☞ STIB Bus 49 (Aristide Briand)
- ☞ Playground, sandbox, combined structures, elements on springs and sports field.

## ENTERTAINMENT

### ROWING

#### CERCLE DES RÉGATES DE BRUXELLES: INTRODUCTION TO ROWING AND KAYAKING

- ☞ Quai de Veeweyde, 65
- T: 0478 38 72 27 (Mr Paul Polspoel)
- info@aviron-crb.be
- www.aviron-crb.be

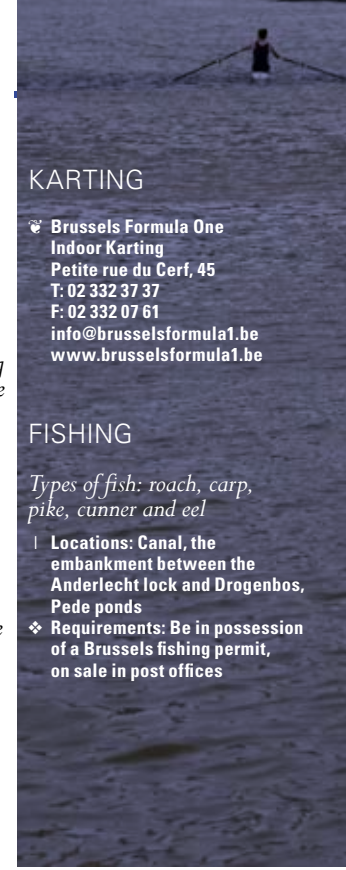
#### BRUSSELS BY WATER

- ☞ Quai des Péniches, 2bis
- 1000 Brussels
- T: 02 203 64 06
- F: 02 203 07 09
- bbw@scaldisnet.be
- www.scaldisnet.be

During the season (May to September), river tourism and taking a boat are an original way to explore another facet of Anderlecht and the history of its canal. Along this waterway, there are still a good many examples of an industrial history that has practically disappeared. These river excursions can be combined with biking or walking. Every year, the programme is extended.

To find out more, check phone or the website. To reserve an excursion:

- ☞ Rivertours reservation centre
- T: 02 218 54 60
- info@rivertours.be



## ACCOMODATION

### BED & BREAKFAST

#### A L'AUBE D'UN LOFT

Former workshop converted into a magnificent design loft with modern garden and jacuzzi. The hostess welcomes you and guides you step by step in Brussels and surroundings.

- ☞ Petite rue du Moulin, 30
- T: +32(0)491 08 66 75
- alabedunloft@gmail.com
- http://sites.google.com/site/alabedunloft/Home

- ☞ Approx. price € 80 to € 100 a night/2 p, breakfast included.
- Two themed rooms : Tintin and Jacques Brel

### KARTING

- ☞ Brussels Formula One
- Indoor Karting
- Petite rue du Cerf, 45
- T: 02 332 37 37
- F: 02 332 07 61
- info@brusselsformula1.be
- www.brusselsformula1.be

### FISHING

Types of fish: roach, carp, pike, cunner and eel

- ☞ Locations: Canal, the embankment between the Anderlecht lock and Drogenbos, Pede ponds
- ☞ Requirements: Be in possession of a Brussels fishing permit, on sale in post offices





# MEYLEMEERSCH

The university hospital site is the link between Neerpede and the Valley of Chant d'Oiseau/Vogelenzang. It is currently an expanding area within the commune housing a major industrial complex. This development has very modern and functional architectural features. The site is the starting off point for many signposted walks in the natural listed site of Chant d'Oiseau.

► Specimens of human anatomy  
© Museum of medicine

Route de Lennik,  
Metro Erasme

► Specimens of human anatomy  
© Museum of anatomy and human embryology

Erasmus Campus

# MUSEUMS

## MUSEUM OF MEDICINE

The Museum of Medicine has a collection of 500 objects which explain the development of medical science - paintings, miniatures, engravings, lithographs, old books, amulets, statuettes, medicine chests, rural pharmacies, oracle dishes and surgical instruments. The originality of the exhibition is using art to illustrate the development of medical concepts from Antiquity to the modern age.

The main room has a chronological route showing the supernatural beliefs of Antiquity, surgical lalling, from anaesthetics to the invention of auscultation instruments.

Other rooms have a itinerary going from Egypt to Mesopotamia, pre-Columbian medicine as practised by the Aztecs, Mayas and Incas, the art of healing using magic, etc. The museum also has a collection of anatomical waxes from the 19th century - heads full of acne, deformations of all kinds, and a sword swallower.

A room called Hell, accessible to visitors with a warning, is devoted to sexually transmitted diseases - an excellent way of warning visitors against STDs.

Erasmus Campus  
Route de Lennik, 808

► Specimens of human anatomy  
© Museum of medicine

❖ Practical information  
Open from Monday to Friday, from 1 pm to 4 pm or by appointment. Guided tours lasting one hour to one and a half hours can be requested every day, including weekends, for groups and by appointment. Temporary exhibitions - Documentation centre - Centre of scientific demonstrations. Auditorium accommodates 150 persons

❖ Access  
Erasmus metro. Accessible to those with restricted mobility

❖ Information  
Tourism Information Anderlecht  
Rue du Chapelain 1 - 7  
1070 Anderlecht  
T: 02 526 83 65  
tourism@anderlecht.irisnet.be  
www.anderlecht.be

❖ Museum of Medicine  
Erasmus Campus  
Route de Lennik, 808  
1070 Anderlecht  
T: 02 555 34 31 F: 02 555 34 71  
museumed@erasme.ulb.ac.be  
www.medicmuseum.be





### MUSEUM OF ANATOMY AND HUMAN EMBRYOLOGY

Situated on the hospital faculty campus of Anderlecht, this museum displays various authentic specimens relating to human anatomy (items preserved in alcohol, plasticine materials, skeletal items), and moulds. It also illustrates human development using various items such as normal or teratological fetuses, moulds and iconographic documents. One section is devoted to bone pathologies and various display cases have examples of dental anatomy, comparable anatomy of the jaw and dental anomalies.

◆ Specimens of human anatomy

© Museum of anatomy and human embryology

#### ◆ Practical information

##### Opening days and times:

By appointment, with priority given to groups. Guided tours: Bn appointment (min. 20 pers.)

Reservations: T: +32(0)2 555 63 76

F: +32(0)2 555 63 78

anatemb@ulb.ac.be

#### ◆ Entrance fee

To be arranged with the secretariat

#### ◆ Access

Map: [www.ulb.ac.be/docs/campus/erasme.html](http://www.ulb.ac.be/docs/campus/erasme.html)

Bus: 74 – 98 – F – LK – RH

Metro: line 1B, Erasmus stop

Accessible to those with restricted mobility

#### ◆ Information

Tourism Information Anderlecht

Rue du Chapelain 1 – 7

1070 Anderlecht T: 02 526 83 65

tourism@anderlecht.irisnet.be

[www.anderlecht.be](http://www.anderlecht.be)

#### ◆ Museum of Anatomy and Human Embryology

Erasmus Campus

Faculty of Medicine

Building G, level 2

ULB – CP 619 – Anatomy,

biomechanical and organogenetic laboratory

Route de Lennik 808

1070 Anderlecht

T: +32 (0)2 555 63 76

F: +32 (0)2 555 63 78

slouryan@ulb.ac.be

anatemb@ulb.ac.be

## ACCOMODATION

### ERASME\*\*\*

Modern, three-star hotel with restaurant, near the university and Erasmus hospital, on semi-natural site of Vogelenzang and Anderlecht golf club.

◆ Route de Lennik, 790

T: 02 523 62 82

F: 02 523 62 83

info@hotelerasme.be

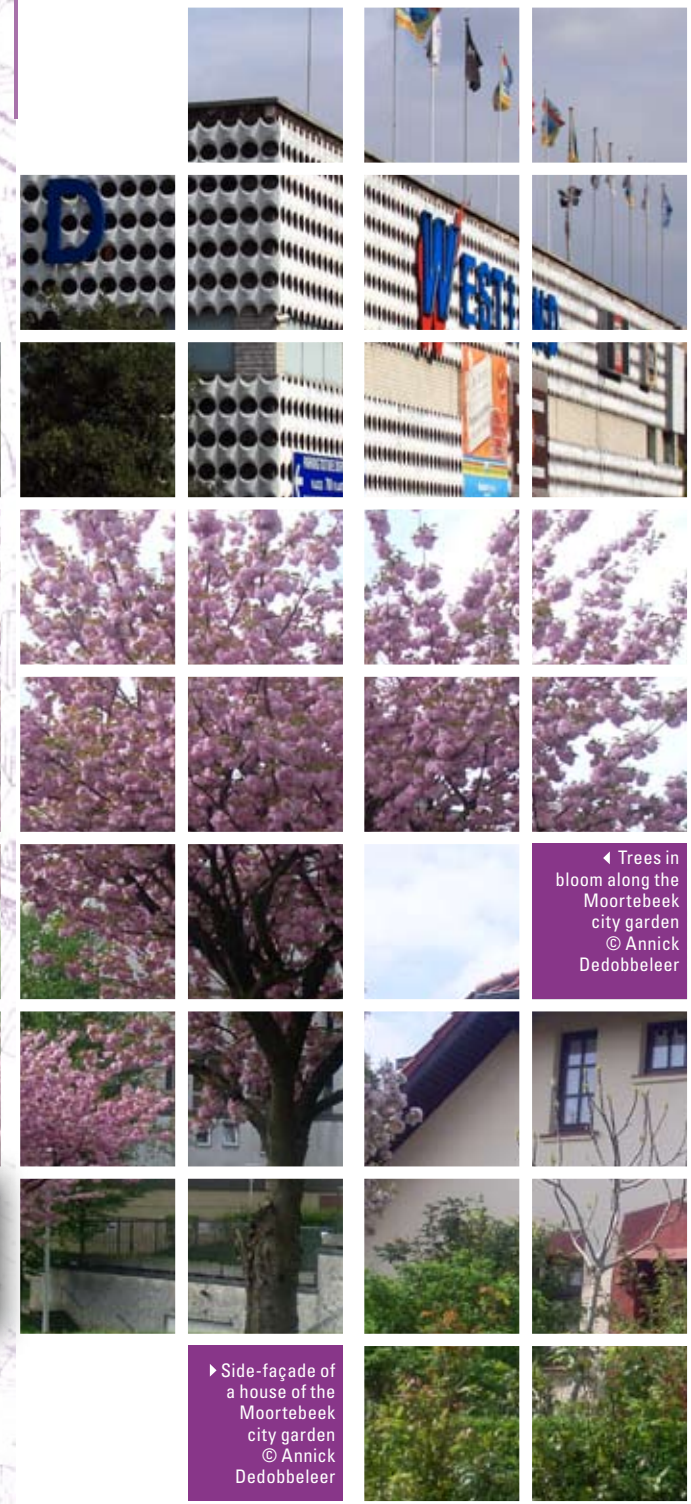
[www.hotelerasme.com](http://www.hotelerasme.com)

◆ 81 rooms and 8 apartments  
Average price from € 95 to € 125 per day

## MOORTEBEEK & PETERBOS

Two very distinct districts with very different social purposes.

▶ The 1970's architecture of the Westland Shopping Center



◀ Trees in bloom along the MoortebEEK city garden  
© Annick Dedobbeleer

STIB Bus 46 (MoortebEEK)

▶ Side-façade of a house of the MoortebEEK city garden  
© Annick Dedobbeleer





◀ Moortebeek's cottages  
© Annick Dedobbeleer

### MOORTEBEEK CITY GARDEN

The city garden of Moortebeek, which means "boggy brook", a name that was given by minor nobility in the 18th century, was created in 1921. It consists of 330 houses. In 1932, 124 apartments were built. This project currently houses more than one thousand people.

The city garden has a very harmonious set of houses with educational and sports infrastructures whose aim is the freeing of the working class and everyone's personal development. This architectural entity is the most representative of the city garden movement of the 20th century which has been used several times as the backdrop for famous films.

| STIB Bus 46 (Moortebeek)

## PLACES OF INTEREST



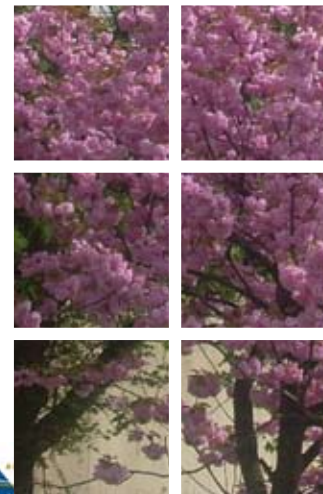
## EXHIBITION VENUES

### DUPUIS/CRÉDIT AGRICOLE GALLERY

☎ Avenue Sylvain Dupuis, 251  
T: 02 558 73 81 F: 02 558 76 35  
www.creditagricole.be  
| STIB Bus 75, 89 (Fruits), De Lijn Bus 116, 117, 118 (Fruits)

### WESTLAND SHOPPING CENTRE, ANDERLECHT

☎ Avenue Sylvain Dupuis, 433  
T: 02 524 00 14  
F: 02 527 00 18  
www.westlandshopping.be  
| Bus STIB 46, 75, 89  
De Lijn 116, 117, 118

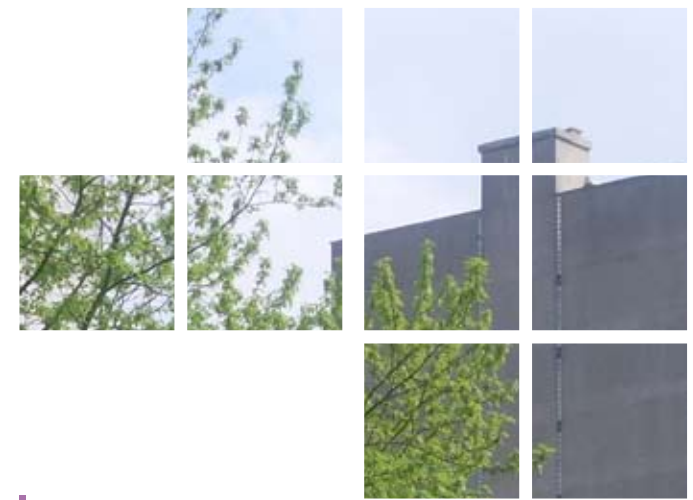


## ENTERTAINMENT

### WESTLAND SHOPPING CENTRE, ANDERLECHT

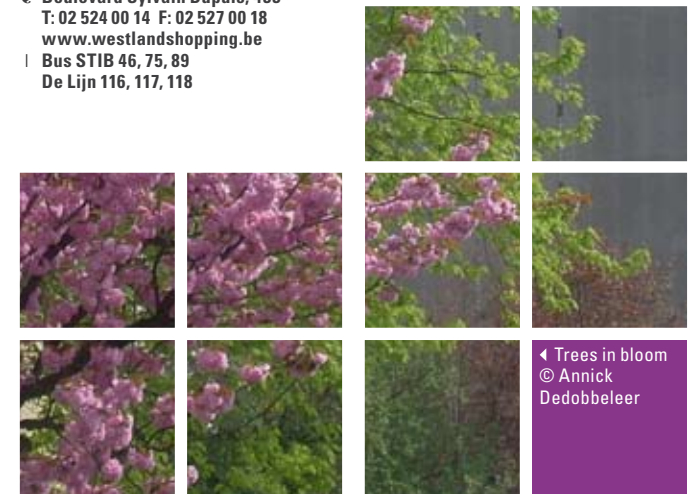
Large commercial centre with 115 outlets and many kiosks, open every day from 10 am to 7.30 pm and on Friday until 8 pm. The Westland Shopping Centre was opened in 1972, and was expanded in 1991 and 1992. In 2000, its whole design was subject to an in-depth review to create a pleasant, modern and light space. The building reflects the architecture of the 1970s with a façade flanked by a white screen wall which represents a bee hive.

☎ Boulevard Sylvain Dupuis, 433  
T: 02 524 00 14 F: 02 527 00 18  
www.westlandshopping.be  
| Bus STIB 46, 75, 89  
De Lijn 116, 117, 118



### SECOND-HAND AND COLLECTORS' FAIR

☎ Boulevard Sylvain Dupuis, 433  
| Bus STIB 46, 75, 89  
De Lijn 116, 117, 118  
❖ Every Sunday, from 8 am to 1 pm. In winter, the market is held inside the Westland Shopping Centre. In summer, it is held on the car park along Boulevard Sylvain Dupuis



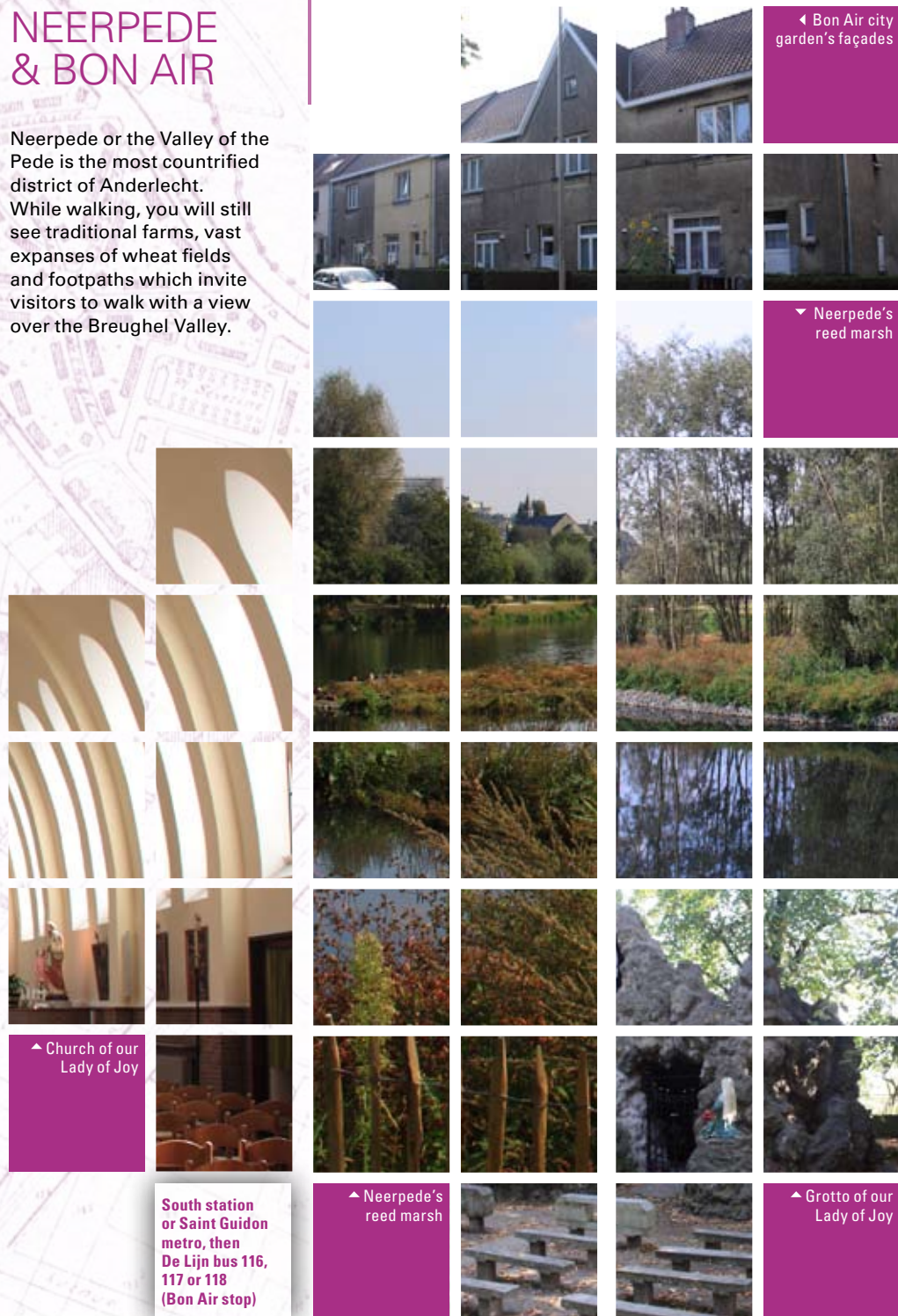
◀ Trees in bloom  
© Annick Dedobbeleer





# NEERPEDE & BON AIR

Neerpede or the Valley of the Pede is the most countrified district of Anderlecht. While walking, you will still see traditional farms, vast expanses of wheat fields and footpaths which invite visitors to walk with a view over the Breughel Valley.



◀ Bon Air city garden's façades

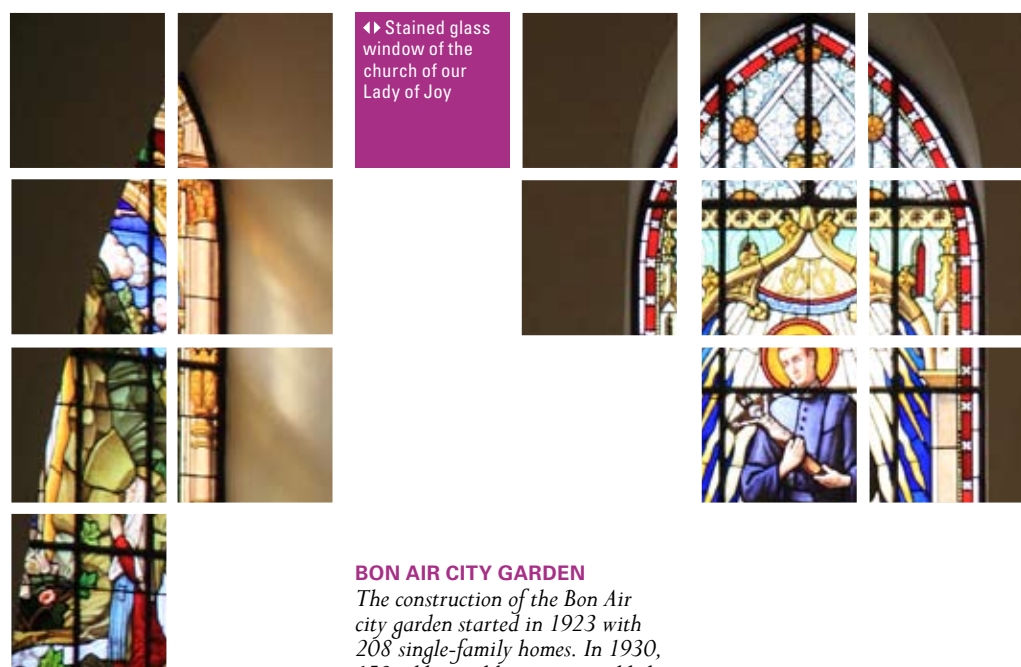
▼ Neerpede's reed marsh

▲ Church of our Lady of Joy

South station or Saint Guidon metro, then De Lijn bus 116, 117 or 118 (Bon Air stop)

▲ Neerpede's reed marsh

▲ Grotto of our Lady of Joy



◀▶ Stained glass window of the church of our Lady of Joy

## PLACES OF INTEREST

**BON AIR CITY GARDEN**  
 The construction of the Bon Air city garden started in 1923 with 208 single-family homes. In 1930, 158 additional houses were added. After the Second World War, 40 houses with bathrooms were erected. The final phase dates from 1953 with 33 new houses. This district borders on the Valley of the Pede, the rural entity of Anderlecht, where many signposted footpaths pass through fields under the watchful eye of the Luizen mill.

▮ STIB bus 46 (Sibelius) see Méli-Mélo: city gardens

**CHURCH OF OUR LADY OF JOY AND SAINT GÉRARD MAJELLA**  
 Neo-gothic church dating from 1917 that overlooks the ponds and Pede park.

Not to be missed is a magnificent imitation grotto of Lourdes, decorated with statues of the Virgin and of Bernadette Soubirou. The brick structure, covered in a thick coating of cement imitating the uneven rock of Massabielle, has always been popular judging by the number of lit candles. This cult dates from around the First World War. The grotto has small benches for meditation.

☎ Rue de la Floraison, 35-37  
 T: 02 520 02 29  
 | STIB Tram 81 (terminus)

TAKE A WALK ON THE ANDERLECHT SIDE



◀ Bon Air city garden





## MUSEUM & EXHIBITION VENUE



### THE LUIZEN MILL

A real green lung bordering on the Brussels region, the hamlet of Neerpede, where the Pede meanders through a green valley, is the rural part of Anderlecht par excellence. While walking along, you can still see some traditional square farms, vast expansions of hedged fields and several footpaths for walkers. Due to its magnificent country views of a bygone age, this hilly region, which has remained practically intact, evokes the countryside painted by Breughel, in which a windmill, similar to the Luizen Mill, dominates the valley and attracts the walker from every angle.

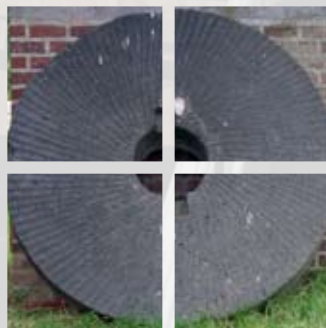
Erected on the Vlasendael plateau between 1862 and 1864, built onto a farm in rue des Papillons, the windmill, known as the "Luizenmolen" ceased operations in 1928. In 1939, it was finally bought by the municipality of Anderlecht which intended to renovate it. After having been listed as a monument during the war, it was declassified in 1954! Completely dilapidated, it was demolished in February 1955.

It was only a nostalgic memory in the heart of many inhabitants of Anderlecht when in 1992, the Luizen

Mill Anderlecht association was set up with the aim of rebuilding an exact replica. In May 1999, a true copy of the old mill was officially opened. It has been active since then and once again listed as a protected monument in February 2007.

There are several educational events which take place here. The Luizen Mill, now rebuilt, is not only one of the richest tourist attractions but also an important witness to the rural history of Anderlecht. Every year in the month of June, there is a large and popular folklore festival which is held here to the delight of both young and old.

📍 Rue des Papillons



#### ❖ Practical information

The Luizen Mill is accessible to the general public on the second and fourth Sunday of every month from 2pm to 5pm. Apart from these days, a guided tour can be had on appointment. For school visits, you have to reserve one month in advance. Reservations by phone: 02 523 32 49.

The site is an ideal backdrop for photo and video films (marriages, communions, etc.)

#### ❖ Access (publics transport)

South station or Saint Guidon metro, then De Lijn bus 116, 117 or 118 (Bon Air stop), then cross avenue d'Itterbeek and take rue van Rijmenant and at the end on the right, rue des Papillons. The site is accessible to those with reduced mobility, except for the mill itself which has stairs

#### ❖ Information

Tourism Information Anderlecht  
Rue du Chapelain 1 – 7  
1070 Anderlecht T: 02 526 83 65  
tourism@anderlecht.irisnet.be  
www.anderlecht.be

#### ❖ The Luizen Mill

Rue des Papillons T: 02.520.43.59  
Facebook: Luizenmolen

▶ Entrance of the Luizen Mill



◀ Neerpede's reed marsh

## NATURE RESERVE

### NEERPEDE REED MARSH AND KOEVIJVER DALE

On 10 July 1997, the authorities of the Brussels Region classified the Neerpede reed marsh and the Koevijver dale which are among the most beautiful examples of Anderlecht rural countryside. The reed marsh (1.5 ha), which runs alongside a local footpath linking rue de Neerpede to rue du Pommier, is located in a marshy depression in the middle of meadows. This is one of the most extensive reed marshes in the Brussels region. The Koevijver dale, which is extremely beautiful, has been shaped by vast hay meadows, wetlands and cultivated fields (9 hectares). It goes from rue du Koevijver, rue des Betteraves and rue du Froment, along the Brussels-Ostend railway track.

### PEDE REGIONAL PARK

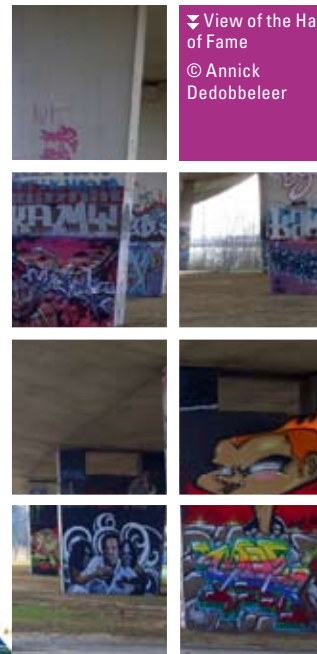
The pond in this park is surrounded by marshland. Near the pond, there is the Pede sports centre which offers a very wide range of sports: skiing, golf, hockey, tennis, badminton, a play centre for young children, a rugby pitch, etc. From Rue des Poulets, you can see a small picturesque waterfall which runs from the pond. On certain Sundays, regattas of miniature boats are held.

📍 Rue de Neepede, Rue du Chaudron, Drève Olympique, Rue des Poulets  
STIB Tram 81 (terminus) & Bus 46  
❖ Playground (for children from 2 to 12 years of age)

### HALL OF FAME NEERPEDE PONDS

Open air and open all year round!

This is the only space authorised for spray can art in Brussels - more than one hundred pillars under the ring road at the level of the Neerpede ponds. This open air gallery has works of art for all tastes in all seasons.



▼ View of the Hall of Fame  
© Annick Dedobbeleer

▼ Koevijver dale



## ENTERTAINMENT

The site offers more activities than those indicated. The addresses selected are those where the visitor can exercise a sport or take part in a leisure activity without having to be a member or take out a subscription.

### BEACH VOLLEYBALL

#### CLUB DE SPORT AQUAMARINE

☎ Route de Lennik, 1041  
T: 02 527 84 95  
F: 02 527 84 96  
aquamarine@skynet.be  
www.aquamarine.be

### HORSE RIDING

#### AMAZONE STABLES

Horse riding, private or group lessons from six years of age

☎ Rue des Bettraves, 60  
T: 02 522 19 41

#### PONY PARADISE

Horse riding for everyone, hippotherapy

☎ Rue des Poulets, 7  
T: 0475 851 440

### GOLF

#### ROYAL AMICALE ANDERLECHT GOLF CLUB

18-hole golf course (two water obstacles), golf school, practice range, brasserie

☎ Rue Scholle, 1  
T: 02 521 16 87 F: 02 521 51 56  
info@golf-anderlecht.com  
www.golf-anderlecht.com

## MULTISPORTS

### MAYFAIR

Sports activities for adult and children

☎ Rue des Lapins, 32  
T: 02 522 18 80 / 0494 211 400

### MINI – MAYFAIR

Activities for young children from three years old (psychomotor exercise and play areas) and sports training courses

☎ Rue de Neerpede, 805  
T: 02 522 79 92

## FISHING

### PEDE PONDS

Canal, between Anderlecht lock & Drogenbos. Types of fish: roach, carp, pike, cunner and eel

❖ Requirements: Be in possession of a Brussels fishing permit

## PÉTANQUE (BOWLS)

#### CLUB DE SPORT AQUAMARINE (COVERED LANES)

☎ Route de Lennik, 1041  
T: 02 527 84 95  
F: 02 527 84 96  
aquamarine@skynet.be  
www.aquamarine.be

## SKIING

### LE YETI SKI

Open from September to May – children from 5 years old

☎ Drève Olympique, 11  
T: 02 520 77 57

## TENNIS

#### CLUB DE SPORT AQUAMARINE

Outside hard courts

☎ Route de Lennik, 1041  
T: 02 527 84 95  
F: 02 527 84 96  
aquamarine@skynet.be  
www.aquamarine.be

## EATING OUT

### LOCAL DISHES

#### LE CHALET DE LA PEDE

Situated opposite the Pede ponds, the restaurant and terrace have a stunning view of Brussels. Top-quality wine list.

☎ Rue de Neerpede, 575  
T: 02 521 50 54  
eric@chaletdelapede.be  
www.chaletdelapede.be

❖ Closed on Monday during the day and Tuesday evening  
Credits cards: Visa and Master Card  
Meal vouchers  
Average price of a meal from € 30 to € 38

#### IN DEN APPELBOOM

Quiet restaurant, in a natural setting, where quiet and good food go hand in hand. Garden, trampolines and bouncy castle for children.

☎ Rue du Pommier, 401  
T: 02 520 73 03 F: 02 522 35 71  
appelboom@skynet.be  
www.indenappelboom.be

❖ Open seven days a week  
Credit cards: Visa and Master Card  
Average price of a meal, between € 35 and € 45

#### DE NOTELAAR

Restaurant and brasserie with regional tradition. Typical dishes. Large garden. Swings for children.

☎ Rue du Pommier, 459 – 461  
T: 02 527 11 28 F: 02 527 84 41

❖ Closed Tuesday and Wednesday,  
Credit cards: Visa and Master Card  
Average price of a meal € 25 to € 37

## SCHERDEMAEL & QUARTIER DES ETANGS (Ponds district)

The Scherdemael district is one of the strong links in Anderlecht's park system. This example of urban planning, which is typical of the 1950s and 1960s, refers to the famous Charter of Athens in which a number of architects and urban planners in 1933 worked out a new way of living together following the triple credo of Sun, Nature and Space. Anderlecht, more than any other commune within the Brussels agglomeration, was inspired by this. Here you will find housing typical of the 1950s and 1960s, individual houses or apartment blocks. The style of this era is now well established in the region.

► Views of the Pond Park



STIB Tram 81





▶ Pond Park

## PARKS

### CLAETERBOSCH PARK

This is part of the green chain which was set up under the Park System between Scherdemael Park and the Pond Park.

- 📍 Avenue Claeterbosch
- 🚌 STIB Bus 46 (Tollenaere)
- ❖ A mini-football pitch open to everyone

### POND PARK

Very large park which serves as a junction between the Marius Renard quarter and the Pede Valley (Pede Sport). Hilly park full of water courses with fountains home to varied species of water fowl. You may see many fishermen at certain times of the year. In spring, ducks take to the water followed by their chicks while geese move around in groups. This park houses the Hall of Fame, a large communal area reserved for top graffiti artists.

- 📍 Avenue Marius Renard, Boulevard Maurice Carême, Rue Frans Hals, Drève Olympique
- 🚊 STIB Tram 81 & Bus 46
- ❖ Hall of Fame, zone for dogs off the leash, two running tracks for dogs, a exercise track, bowls, fountains and water courses

▶ Mini Golf in the Ponds district

### SCHERDEMAEL PARK

In the 1930s, the local council planned the Scherdemael area on a plateau where there was hardly any marshy growth. The park was opened in 1964. This park is a prime example of what would become the Park System. It has no clear boundaries (like the fences around Astrid Park, for example) and seamlessly runs into the housing surrounding it. It is part of the green belt between Astrid Park and the ponds which tempt visitors to take a walk. There are some rare trees here: the handkerchief tree, the American chicot, golden rain tree, etc.

- 📍 Square De Tollenaere, Avenue Jean Sibelius, Avenue de la Libre Académie, Avenue Capitaine Fossoul, Boulevard J. Bracops
- 🚌 STIB Bus 46
- ❖ Three playgrounds with sandboxes, play elements on springs, a balancing bar, toboggan, combined structure, swings, thuja labyrinth– Table tennis, bowls, basketball and mini football



## ENTERTAINMENT

### MINI GOLF

Open July and August every day and in September, in the weekends. Open to everyone.

- 📍 Corner of rue Debussy and avenue Marius Renard (ponds)
- ☎ T: 02 529 40 54

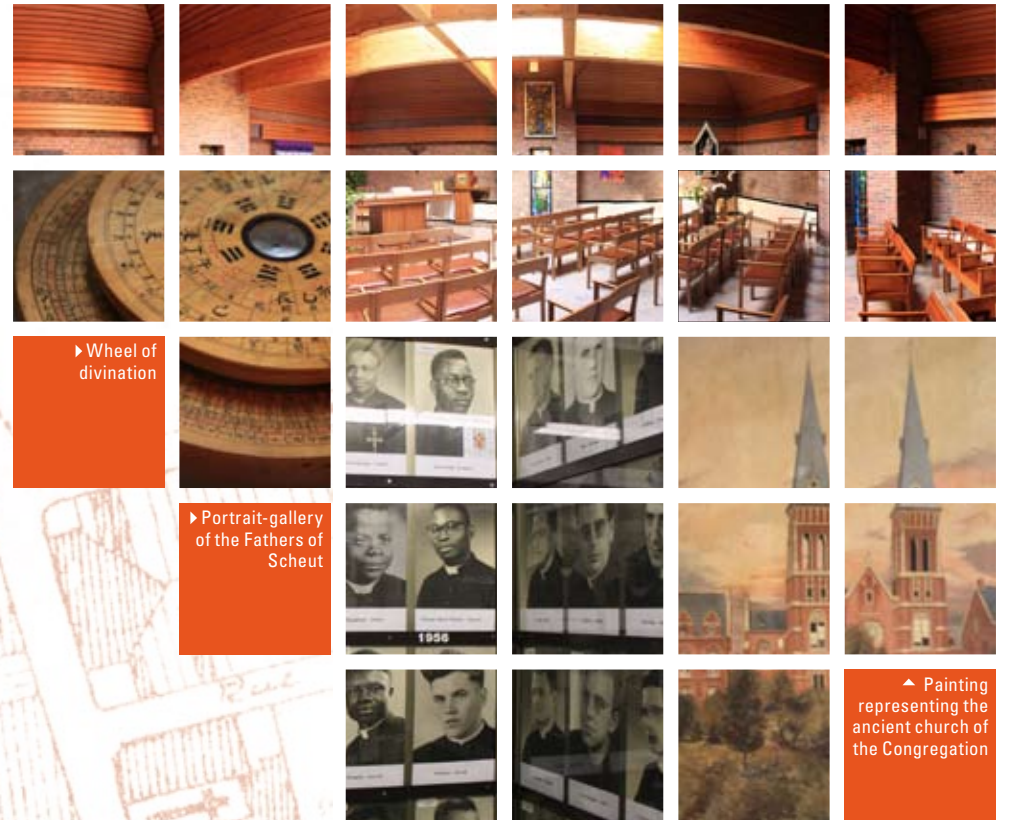


## SCHEUT

📍 Metro Gare de l'Ouest  
De Lijn Bus 127, 128, 136 & 138

▶ Statue of Father Verbiest, founder of the Congregation

▶ Commemorative plaque of Father Verbiest  
▼ Chapel of the Fathers of Scheut



▶ Wheel of divination

▶ Portrait-gallery of the Fathers of Scheut

▶ Painting representing the ancient church of the Congregation



## PLACES OF INTEREST

### SAINT-VINCENT DE PAUL CHURCH

Presbyterian church built between 1935 and 1937 in Art Deco style. This is the work of architect Jos Smolders. Brick is the dominant material even though stone finishes off this attractive construction. An original feature is the brick bell tower which is entirely independent from the church itself.

☞ **Chaussée de Ninove, 371**  
T: 02 521 73 71  
| **Metro Gare de l'Ouest,**  
De Lijn Bus 127, 128, 136 et 138

### MISSION OF THE FATHERS OF SCHEUT: STATUE OF FATHER VERBIST, CHAPEL AND CRYPT

SScheut is a district that is full of history. Peter of Asse or Peter Van Assche, an inhabitant of Moortbeek, planted a linden tree and two hawthorns here in 1443. In 1446, he erected a small statue of the Virgin Mary which was surrounded by a miraculous brightness in the night of Pentecost 1449. From this time onwards, Scheut became a famous place of pilgrimage.



Scheut

In 1450, the young Charles the Bold, son of Philip the Good, laid the first stone of the chapel dedicated to Our Lady of Grace. In 1469, the Duke of Cleves laid the first stone of the church. Cloisters, nuns cells, a Chapter Room, a bookshop, a brewery, a corn barn, stables and a farm were set up around the church. However, it was only in 1531 that the church of Scheut was consecrated. In 1579, Calvinists attacked the convent, making off with anything they could carry and burning down the rest.

In 1863, the little chapel that had escaped destruction, was used as a base for construction of the church erected by the Congregation of the Immaculate heart of Mary, better known under the name of the Missionaries of Scheut. An impressive convent was also built. The whole complex was demolished on 27 August 1974. Most of the land was sold and only one plot kept to rebuild a new and much more modest convent. It is situated on the corner of rue de l'Obus and chaussée de Ninove.

At the entrance to the convent, there is a statue of Father Theophile Verbist (1823 - 1868), founder of the Congregation. The convent houses an impressive gallery of portraits at the entrance to the famous Museum of China. Extend your visit to the modern chapel and go down to the crypt built in honour of the founding father whose remains are kept in an impressive coffin offered by Mongolia as a sign of thanks for his work. This coffin is a rare example of sculptured funerary.

(see China Museum)

☞ **Chaussée de Ninove, 548**  
T: 02 526 14 00  
| **Metro Gare de l'Ouest,**  
STIB Bus 89 (Henri Rey),  
De Lijn Bus 127, 128, 136 & 138 (Obus)



◀ Chapel of the Fathers of Scheut

## ENTERTAINMENT

Walk "In the footsteps of Jacques Brel" – see heading guided tours and thematic walks.

## EATING OUT

### LOCAL DISHES

#### LA BROUETTE

French cooking in a contemporary and warm setting. In good weather, aperitif and coffee served on the terrace.

☞ **Boulevard Prince de Liège, 61**  
T / F: 02 522 51 69  
www.labrouette.be  
❖ Closed Saturday afternoon, Sunday evening and Monday  
Credit cards and Bancontact accepted. Average price of a meal between € 35 and € 55

### BRASSERIE

#### Ô NEW PRINCE DE LIÈGE

Small meals. Jacques Brel used to eat here!

☞ **Chaussée de Ninove, 662 – 664**  
T: 02 522 16 00 F: 02 520 81 85  
❖ Closed Saturday afternoon and Sunday evening  
Credit cards accepted

▶ Portrait-gallery of the Fathers of Scheut



### MUSEUM OF CHINA

The origins of the Museum of China date back to 1862. The first missionaries took back remarkable collection items in their suitcases. Several among them are the result of ethnological research carried out by missionaries. The first section puts the visitor in contact with Chinese language and writing. It also includes a collection of ancient coins. The second section gives an overview of daily life in China and Mongolia illustrated by various objects. The third section concerns the popular beliefs of China and Mongolia and various religions such as Confucianism, Taoism, Lamaism and Buddhism. The last section highlights missionary work in China and the four great periods of contact with Christianity. The museum also houses a gallery of more than 3 000 portraits of missionaries of different continents.

☞ **Chaussée de Ninove, 548**

## MUSEUM



◀ Items from the Collection of the Museum of China

- ❖ **Practical information**  
Guided tours lasting one hour can only be arranged upon request.  
Open from Monday to Friday, from 2.30 pm to 5 pm.  
Entrance is free of charge.  
A catalogue with a brief explanation of the displayed items is available
- ❖ **Access**  
Metro Gare de l'Ouest, STIB Bus 89 (Henri Rey), De Lijn, Bus 127, 128, 136 & 138 (Obus)
- ❖ **Information**  
Tourism Information Anderlecht  
Rue du Chapelain 1 – 7  
1070 Anderlecht  
T: 02 526 83 65  
tourism@anderlecht.irisnet.be  
www.anderlecht.be
- ❖ **Museum of China**  
Chaussée de Ninove, 548  
1070 Anderlecht  
T: 02 526 14 00 F: 02 523 30 48  
missiehuis.van.scheut@skynet.be



# VOGELENZANG & LA ROUE

Two districts and two architectural entities, one bordering the canal and the other bordering Pajottenland. Two surprising sociological, cultural and multicultural microcosms. This district borders on the tow paths of the canal which are frequented by walkers, skaters and cyclists.



Commemorative war monument of the Anderlecht cemetery

Detail of the Elishout Farm

Stained glass window at La Roue city garden

Metro CERIA & La Roue, STIB Bus 75 & 98 (La Roue & CERIA)

Façade of the CERIA campus

Saint Joseph church at La Roue



La Roue city garden

## PLACES OF INTEREST

### LA ROUE CITY GARDEN

The idea of a city garden comes from the UK and the Netherlands where large cities have been emptied and surrounded by a series of autonomous districts. The idea is to create “city gardens” around overpopulated agglomerations where the principles of solidarity and equality are upheld.

The designers of the Belgian city gardens were radically opposed to urban worker houses in the industrial age and offered opportunities for social emancipation to their inhabitants. Anderlecht is the Brussels commune with the most city gardens. La Roue owes its name to the existence at the beginning of the century to a tyre plant. This collection of dwellings symbolises the emancipation of the working classes.

This city garden was built in several stages: 28 houses in 1907-1908 in rue des Citoyens and rue des Colombophiles. In the 1920s, the principle of the cottage was imported from England and adopted for the construction of 47 houses for rental for disadvantaged households consisting of at least three children.

In 1921, 60 other houses were built in the district in the plaine des Loups. Extensions followed until 1928, when the last phase was set up at the place du Confort. At this time, the unit has a communal school and a 75-acre playground.

- Saint Joseph church, place de la Roue, was built just before the Second World War. It appears homogenous and has kept all its original decorative and architectural elements.
- Metro CERIA & La Roue STIB Bus 75 & 98 (La Roue & CERIA)



### CERIA CAMPUS

CERIA, Centre d'Enseignement et de Recherches des Industries alimentaires et chimiques [Centre of Education and Research of the food and chemical industries] in Anderlecht, was built on a 20-hectare site from 1950 to 1954. This unit of buildings in a park has the same appearance as educational complexes in the 1930s. The site currently has 16 buildings and houses six educational institutes, a library, a public swimming pool, a sports centre, a theatre and a boarding school.

- Avenue E. Gryson, 1 Metro CERIA, STIB Bus 75 (CERIA) accessible to the public only on Saturday, from 10 am to 6 pm

### ELISHOUT FARM

“Elishout” or “Alder woods” is the original name of some woods that used to belong to the powerful and noble Aa family. The main house had two floors. The service buildings, barns and stables were situated on the sides of the house. While Elishout farm was expanded and repaired several times, the current constructions date from 1754 as the date on the façade indicates. The buildings are higher than the courtyard no doubt to avoid the periodic flooding of the nearby Senne. This complex remains one of the best examples of what might have been one of the large abbey farms of the Brussels region.

- Avenue Emile Gryson Metro CERIA, STIB Bus 75 & 98 (CERIA)



## ANDERLECHT CEMETERY

The Chant d'oiseau cemetery was inaugurated in 1954. It has about 50 000 tombs and funerary monuments and extends over 18 hectares with 64 lawns, four of which are lawns of honour and four reserved for the tombs of war victims on a tree-lined plateau. Not to be missed - a commemorative war monument 1914-1918 - 1940-1945 representing a soldier resting on his rifle, a civilian with crossed arms and a woman pressing her baby against her breast. Some tombs are worthy of interest, for instance, Lawn 61: tomb of the spouses Lucas-Supriere: a sculpture in white marble of a woman, dreaming and kneeling surrounded by roses. Lawn 62: a tomb from the 1940s, a bluestone coffin set on a pedestal. Lawn 64: tomb of JB Sauvage: a crying woman standing near a cut-off tree trunk covered in ivy, the Cosyns - Dehaeseleer tomb: dating from the beginning of the 20th century. Sculpture in imported Italian marble representing a standing adolescent in a long robe decorating the tomb. And many others.

☞ Avenue des Millepertuis  
| Metro Eddy Merckx

## NATURE RESERVE

### SEMI-NATURAL, LISTED SITE OF VOGELENZANGBEEK VALLEY (CHANT D'OISEAUX)

There are meadows, wasteland, marshy basins, hedges and small woods on a surface area of around 25 hectares.

This vast mixture of vegetation and wildlife is characteristic of Brabant wetlands and led to the site being listed on 12 September 1996.

The Royal Belgian Society for the Protection of Birds maintains the Vogelenzangbeek valley on this site, a semi-natural listed area.

## ENTERTAINMENT

### SWIMMING

#### CERIA SWIMMING POOL

☞ Rue des Grives, 51  
T: 02 523 11 65  
F: 02 523 32 70  
complexesportifduceria@skynet.be

◀ In the heart of the listed site of semi-natural Vogelenzangbeek valley (Chant d'Oiseaux)

### CORA

Hypermarket and shopping gallery with about 40 outlets and a dozen restaurants, open from Monday to Saturday.

☞ Drève Olympique, 15  
T: 02 558 55 11  
anderlecht@Cora.be  
www.cora.be

## EATING OUT

### LE MAS DE LA FARIGOULE

Family restaurant in a very welcoming, local setting. Traditional and varied French cooking and extremely good wine list

☞ Chaussée de Mons, 1427  
T: 02 520 48 01 F: 02 523 36 81  
❖ Closed Sunday evening  
Credit cards, Bancontact & meal vouchers accepted  
Average price of a meal € 40

## GUIDED TOURS IN ENGLISH

Anderlecht: Saint Guidon and Erasmus hand in hand

☞ Association of Guides of Brussels and Belgium (AGBB)  
Guided tours in French, Dutch, English and German  
Town Hall - Grand Place  
1000 Brussels F: 02 514 45 38  
guides@brusselsinternational.be  
Reservations by letter, fax or e-mail only

The ABC of architecture of Anderlecht: Art nouveau and Art Deco (for groups only)

The old "Rinck" and its treasures: Historic centre

☞ Bus Bavard (chatterbus) asbl  
Guided tours in French, Dutch and English  
Rue des Thuyas, 12 1170 Bruxelles  
T: 02 673 18 35 F: 02 675 19 67  
bushavard@skynet.be  
www.bushavard.be

The Rinck

The historic heart Art Deco district of the Meir

Exploring the city garden of Moortebeek

The Triangle d'or and Cureghem

In the footsteps of Jacques Brel in Anderlecht

Metro art in Anderlecht

The Collegiate church of Saint Peter-Paul and Guy

The Town Hall of Anderlecht

☞ Klare Lijn vzw  
Tailor-made guided tours in French, Dutch, English and German  
Rue du Village, 40  
T: 02 520 83 93  
GSM: 0493 50 40 60  
info@klarelign.be

## FESTIVALS, FOLKLORE & MARKETS

### SPRING FESTIVAL

Parade of giants, cultural events, exhibitions and village fete.

❖ End of April - beginning of May

### ARTS AND CRAFTS MARKET

❖ End of April - beginning of May

### MUSIC FESTIVAL

Shows, concerts, entertainment.

❖ Third weekend of June

### LUIZEN MILL FESTIVAL

Country festival, visits to the mill, games for children and musical entertainment, parade of Anderlecht giants (Guild of the Companions of Saint Guidon), bun fight, etc.

❖ June

### TOURNEE GENERAL

Festival of the Flemish community: free entertainment, book fair, shows and games for children, information fair of the Flemish cultural association.

❖ End of June

### OPEN AIR CINEMA

❖ July

### HERITAGE DAY

Depending on the theme of the year.

❖ Third weekend of September



## PROCESSION OF SAINT GUIDON AND OUR LADY OF GRACE

Every year, an age-old procession retraces the life of Our Lady of Grace and Saint Guidon and commemorates the latter's death. It takes place in the streets of Anderlecht. It is always held on the Saturday preceding the annual market.

The procession consists of seven floats pulled by horses and around 400 figures in period costume. In collaboration with the religious and local authorities, the companions of Saint Guidon are determined to continue this procession. It passes through rue du Village, rue Formanoir, rue Aumale, avenue Auber and avenue Vander Bruggen, rue Wayez, avenue Paul Janson and rue Jacobs.

❖ Mid-September

## HISTORICAL RE-ENACTMENT OF THE PROCESSION OF SAINT GUIDON & OUR LADY OF GRACE

☞ Rue Edmond Delcourt, 38  
T: 02 521 38 36 GSM: 0472 333 968  
F: 02 641 48 22 info@st-guidon.be  
www.st-guidon.be

## ANNUAL MARKET

All the streets of the historic centre have street markets, a giants parade and fair.

❖ Mid-September

## CARLESS SUNDAY

Entertainment in the various districts.

❖ Third weekend of September

## A PASSION FOR BOOKS (FRENCH)

Two weeks dedicated to literature, books, reading and writing. Five or six activities are held in Anderlecht every year - public readings, meetings with authors and illustrators, exhibitions, conferences, workshops, writing competitions, etc.

❖ Third week of October

## LIBRARY WEEK (DUTCH)

A week of entertainment, exhibitions, shows and workshops on an annual theme.

❖ Novembre

## CHRISTMAS MARKET

Christmas concerts, visit of Father Christmas and arts and crafts market.

❖ From the third week of December

## WEEKLY MARKETS

### MIDI MARKET

The second biggest, after Ventimiglia in Italy. Around 450 street stalls (food and clothing). It is held around the South station at the intersection of the municipalities of Saint Gilles and Anderlecht.

☞ Avenue Fonsy  
| Metro Gare du Midi  
STIB all trams that stop at Lemmonier and the Gare du Midi, the same for all buses.

❖ Every Sunday morning to 1.30 pm

## SLAUGHTERHOUSE MARKET

Apart from the architectural and historic interest of the site, this very large market which is completely covered has a wide range of products.

☞ Rue Ropsy Chaudron  
T: 02 521 54 19 – info@abatan.be  
www.abatan.be

| Metro Clémenceaux or Delacroix

❖ Every Friday, all day Saturday and Sunday until 2 pm

## SECOND-HAND MARKET AND COLLECTORS FAIR AT THE SHOPPING CENTRE

☞ Bd Sylvain Dupuis (near the ring road)  
❖ Every Sunday from 8 am until 1 pm  
T: 0477 83 88 34

## LA ROUE DISTRICT

| Metro La Roue  
❖ mercredi de 7h à 13h

## AUMALE DISTRICT (HISTORIC CENTRE)

| Metro Saint-Guidon  
STIB Tram 56  
❖ Friday, from 7 am to 1 pm

## RESISTANCE DISTRICT (HISTORIC CENTRE)

| STIB Tram 56 (Résistance)  
❖ Saturday, from 7am to 1 pm

## VAILLANCE DISTRICT (HISTORIC CENTRE)

| Metro Saint-Guidon  
STIB tram 81, bus 46 and 49,  
De Lijn 116, 117, 118 (stop at St Guidon)  
❖ Wednesday, from 1 to 7 pm

❖ All these activities are mentioned under the agenda heading of the communal website [www.anderlecht.irisnet.be](http://www.anderlecht.irisnet.be). You will find all the details of events month by month and details of the various organisers

## TOURISM INFORMATION ANDERLECHT (BRUSSELS)

Rue du Chapelain 1-7 (historic centre)  
T: 02 526 83 65

[tourism@anderlecht.irisnet.be](mailto:tourism@anderlecht.irisnet.be)

[www.anderlecht.be](http://www.anderlecht.be)

Facebook : Maison du Tourisme d'Anderlecht: general information and sightseeing programs

## MONUMENTS AND SITES DEPARTMENT

Rue du Bronze, 14 T: 02 522 22 14  
[fleroy@anderlecht.irisnet.be](mailto:fleroy@anderlecht.irisnet.be)  
[www.anderlecht.be](http://www.anderlecht.be)

## EXHIBITION VENUES

The programme of exhibitions can be obtained in several ways:

You can consult the appropriate heading on the communal website of Anderlecht on [www.anderlecht.be](http://www.anderlecht.be)

For personal contact, contact the Tourism information Department: [tourism@anderlecht.irisnet.be](mailto:tourism@anderlecht.irisnet.be).

Lastly, for every district you will find the details of the various exhibition venues that can be contacted directly

## PRACTICAL INFORMATION

### IMPORTANT ADVICE

This brochure has been drawn up based on information known by the municipality or gathered from the internet. If you have tourist information that you would like to share or would like to make any changes to our information for inclusion in the next edition, do not hesitate to contact the tourist information department of Anderlecht

### PUBLIC TRANSPORT

STIB contact centre  
STIB: 070 23 2000  
[www.stib.be](http://www.stib.be) - Metro, tram & bus  
SNCB: [www.b-rail.be](http://www.b-rail.be)  
for railway stations of the Brussels Capital region  
De Lijn: 070 220 200  
[www.delijn.be](http://www.delijn.be)  
Buses from and to the Brussels outskirts

### TAXIS

Taxis bleus  
T: 02 268 00 00  
[www.taxisbleus.be](http://www.taxisbleus.be)  
[djspatching@taxisbleus.be](mailto:djspatching@taxisbleus.be)  
24h/24  
Taxis verts:  
T: 02 349 49 49  
[www.taxisverts.be](http://www.taxisverts.be)

## BICYCLE RENTAL

### VILLO!

Open 7 days a week, 24 hours a day, Villo! is present throughout the Anderlecht district and enables you to get around freely, day and night. The route to follow is clearly indicated on an on-board, interactive screen. The bikes are completely equipped. Bikes can be collected from one station and taken to another.

T: 078 05 11 10 information and technical assistance [www.villo.be](http://www.villo.be)

### PRO VELO

Rue de Londres, 15  
1050 Bruxelles  
T: 02 502 73 55  
F: 02 502 86 41  
[info@provelo.be](mailto:info@provelo.be)  
[www.provelo.org](http://www.provelo.org)

## CAR RENTAL

### CAMBIO CARSHARING

Stations in Anderlecht  
Bizet – Conseil – Vaillance  
(historic centre) [www.cambio.be](http://www.cambio.be)

## THANKS TO...

Robert Diederich of asbl Anderlechtensia for his input on the subject of the green spaces and parks of Anderlecht and to Frédéric Leroy, Isabelle Brasseur and Kathleen Leys for their help

Information coordinator: Annick Dedobbeleer, Head of department, Tourism information Anderlecht

Based on an initiative of Fabienne Miroir, Deputy-mayor for Tourism, with the support of Mayor Gaëtan Van Goidsenhoven and of the Municipal Board of Anderlecht





ANDERLECHT

Tourism information Anderlecht (Brussels)  
Rue du Chapelain 1 – 7  
B – 1070 Bruxelles  
tourism@anderlecht.irisnet.be  
www.anderlecht.be  
Facebook : Maison du Tourisme d’Anderlecht  
T: 02 526 83 65

Ook beschikbaar in het Nederlands  
Disponible également en français